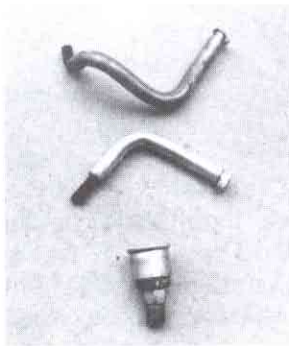
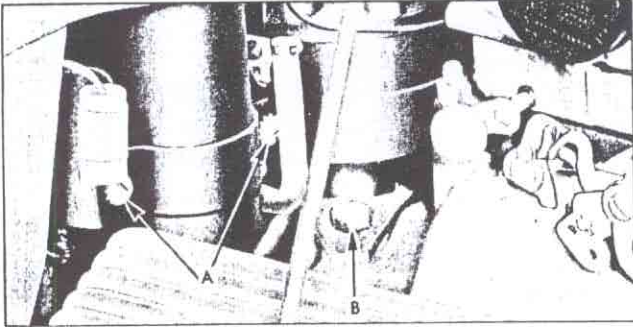


Distributor Oil Tube

By Roy Braatz

1953-54 and some early '55 V-8's used the "GREASE CAP" design to lubricate the distributor shaft. You unscrewed the cap, placing grease into the cap cup and screwed it back on.

'56-'62 radio option Corvettes without F.I. used a long two bent oil tube. The reason was to clear the shielding making it easy to oil.



CORVETTE

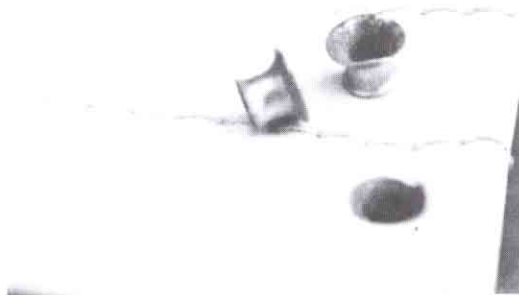
CAR

1953-54

Door Screw Retainers

By Roy Braatz

Picture shows the original kick and door panel screw retainers used on early Corvettes. They were factory pressed into the panels so not to dipple or tear the upholstery when the screws were installed. That is the reason you see many Corvettes using the wrong large washer type bezels of today. Most original panels are thrown away with them still in the panel but by finding some old ones, you can work them out. By grinding the back lip off and glueing them into your new panels you have the original appearance needed for the right-on job. Someone should reproduce them, there s/s.



PARTS FOR SALE

FOR SALE: SMALL BLOCK - BARE HEADS: 3911032 C-18-8 & C-22-8; 3795896 K-10-63 & K-20-63; 3884520 J-15-5 & I-20-6 ALL \$50.00/PR; 3755549 A-12-9 & A-15-9 \$80.00/PR; 3932441 L-30-9 & A-8-70 FRESH GRIND & GUIDES, COMPLETE \$300.00/PR. INT. MANIFOLDS: 3738244 E-3-2 \$100.00; 3837109 C-15-6, 2746829 D-15-1, 346250 H-18-6, 3987771 L-8-72 \$35.00/EA. BIG BLOCK - BARE HEAD 3931083 B-21-9, ONE ONLY \$30.00. INT MANIFOLD 3931067 B-14-9 \$35.00. LARGE AC DOME F/FILTER \$50.00 60 CARB RETURN SPRING BRACKET \$10.00 60 T/STAT HOUSING \$20.00. UPS AVAILABLE.

WANTED:

REBUILDABLE HEADS 3774692 DATED A-1-0 THRU D-15-9. BELLHOUSING 3764591, WATER PUMP 3736493, 4 CORRECT 1960 WHEELS, LONG STYLE LARGE AC F/FILTER. ALL MUST BE REASONABLY PRICED. **THIS IS A SPECIAL REQUEST:** DO YOU HAVE ANY CORVETTE SLACT BOOKS THAT YOU NO LONGER NEED? I AM TRYING TO USE A SIMILAR IDEA FOR '55-'57 T-BIRDS AND I NEED EXTRA COPIES OF THE BLACK BOOK TO DISTRIBUTE AS EXAMP-LES TO THE BOARD OF DIRECTORS IN THE CLUB. ANY CONDITION WILL DO! I WILL APPRECIATE YOUR HELP.

**Greg Ellis W (206) 584-0222 H (206) 584-5663
10704 Wooddale Ln., S.W. Tacoma, WA 98498**

FOR SALE: NOS PARTS - one 1953-62 lower R.H. A frame \$225, two 1953-62 upper A frames \$100, one 1955 6 volt seal beam retaining ring \$4.00, one 1954 door jam switch \$15.00, one 1955 6 volt switch assy less cyl & keys \$20.00, one 1958-59 switch assy less cyl & keys \$15.00, one 1962 modulator tran vacuum \$20.00, one 1958-62 modulator tran vacuum \$20.00, three 1960-62 lower shock mount brackets \$75.00, one 1953-55 steering knuckle support upper control arm shaft \$25.00, 1960 FI inlet valves \$20.00, 1955-62 8 cy. low HP inlet valves \$20.00. **MANY 1953-? Cast iron powerglide internal parts like shafts, bands, bushings, etc.** **USED PARTS FOR SALE:** one 1953-61 master cylinder cap \$20.00, one 1958 flasher on brake arm \$12.00, two turn signal cromes late design \$10.00, two 1957 front license mount spampe guide \$25.00, two U brackets for turn signals 1957 for 1957 need rechroming \$12.00, one outside mirror \$20.00, three spinners \$60.00, two front crescent bumpers \$20.00, two front bumpers \$20.00. All parts plus shipping.

**Jay Williams (701) 763-6345
RR 1, Box 23, Cleveland, N.D.**