

56 - 62 ALUMINUM THERMOSTAT HOUSING

GM Aluminum Thermostat Housings all have part number 3837223 embossed on the part. As running changes were approved or design change was ordered, GM's suppliers made their changes per GM print, but if the improvement of the part was still functional on earlier cars the suppliers maintained the same part number.

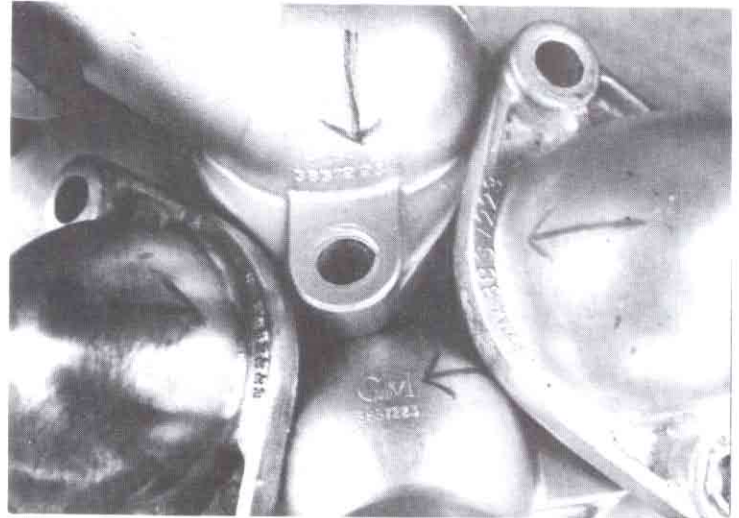
This is where you see a part and its number and at the same time a notation calling the parts as first or second design. First design being early original and second being a usable replacement but redesigned.

That's why when you order from GM or a Corvette shop supplier you may be told it is the original part number, but you'll notice that it may not look like the original. Now that you understand the problem of early and late parts, we'll discuss early and late housings.

By close observation of Fig. 1 & 2, all four parts have the same part number but all four are physically different. First design for 56 to early 57, the part number was located on the left side, also the radiator hose neck was thin, round and the base was solid. FIG 3

FIG. 1

First Design



Fourth Design

Second Design

Third Design

Second Design

Third Design

First Design

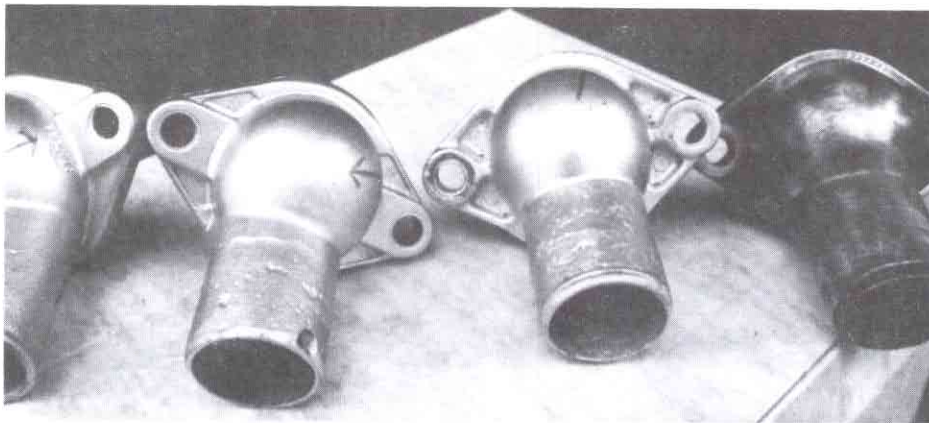


FIG. 2

Fourth Design

Second design for mid 57 to maybe late 60, the part number was located at the top, but now radiator hose neck was thicker with a lower flat support casting. Base was now slightly recessed. FIG. 4

Third design for late 60 - 62, the part number was located at rear base, numbers were large and radiator hose neck was the same as mid 57 to 60 but base was now deeply recessed.

Fourth and last design was 63 and later and replaced all previous designs. Part number is at rear base but number is now much smaller, otherwise same as 60 - 62. All responses are welcome.

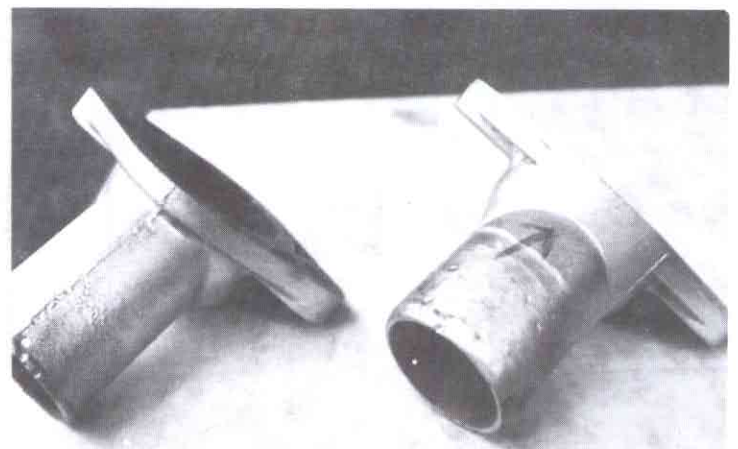


FIG. 3 1956 and 1957

Later FIG. 4