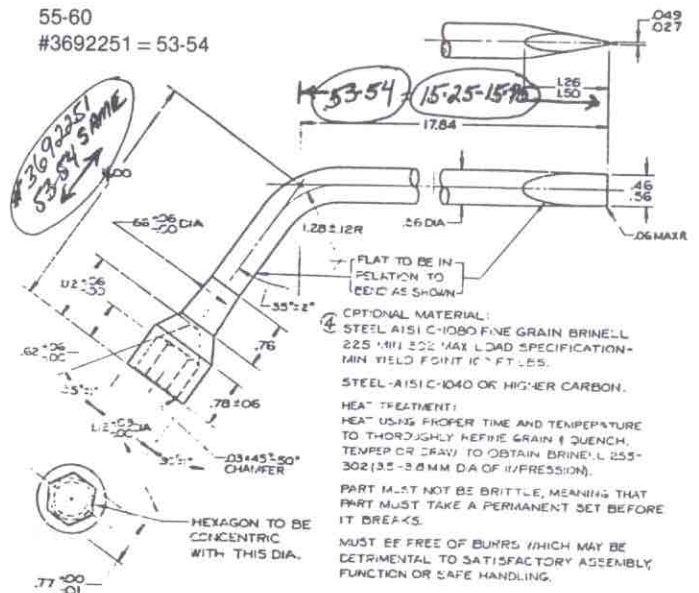


# WHEEL WRENCH AND HANDLE ASSY.

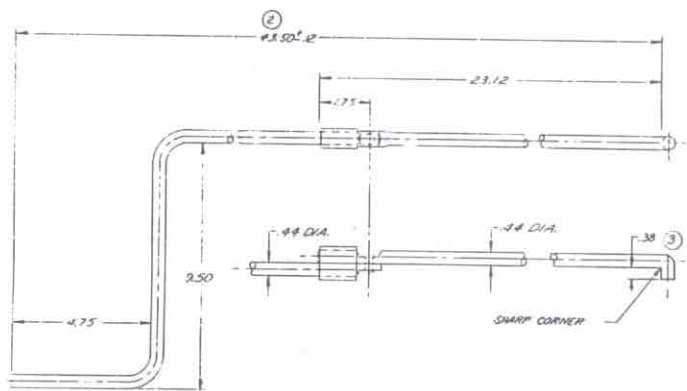
There has been some confusion as to which year and size is correct for a 1953-1962. These prints from the great one, Noland, will help you in determining if you have the right one. I didn't find the print for 1953-1954 so I added the part number and size to the 3710686 print. To be sure you understand, the 1953-1954 is the same length from the HEX head to the first bend (4 inches) then from the bend to its tapered end, 1953-1954 is (15.25-15.75), where 1955-60 is (17.84), a difference of about two inches. The handle assemblies are the same for 1953-1962. The difference in 1961-1962 handle is the radius bent at the end, most likely to make it easy to remove the hub-cap. Also because the jack was changed in 1961-1962 now having a hole added, so that you could pull the jack out from under the Vette easy, the wrench end was changed along with some minor dimensions (see print). The paint was an enamel, glossy and having no part number on the handle or wrench. att. (the jack was also a glossy enamel paint). All three parts were dipped through a bat of paint and not sprayed.

—Editor

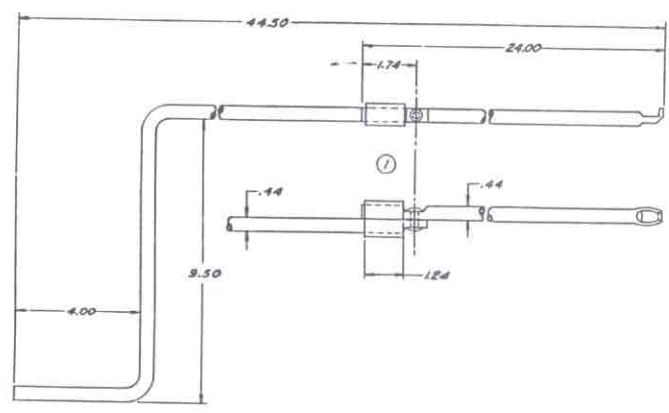
55-60  
#3692251 = 53-54



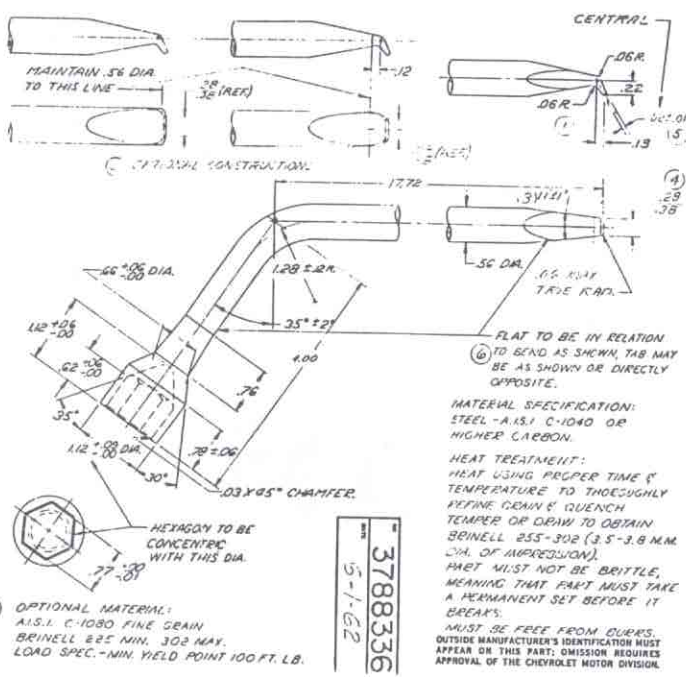
#3710686



61-62  
#3815940



53-60  
#3706351



61-62  
#3788336

1953-1954 was part #3692251, not available.