

## RADIO DELETE CORVETTES

Corvettes that came without a radio and were installed at the dealer later, can be detected in two ways. 1. With the left side lower sill plate removed there will be a hole near the rear area, Fig. 1. The reason for that is that the radio antenna is now running under the sill plate into the hole coming up under the rear drivers seat and along the soft top area L/S. 2. In the soft top area L/S, you will find a hole where the radio antenna continues to the rear antenna mast, Fig. 2.

Why was this done? Because if the vette came with a radio from the factory the antenna cable was run through the body where the rear wiring harness ran through and if later installed as I mentioned it is nearly impossible to install the cable as the factory did. If you have what you think is a radio delete car, you will have a hole in the soft top area as I said because the dealer did that or you will have no hole, and no evidence of a hold at the rear fender. Knowing this will help you determine something few owners realize.

Editor Roy

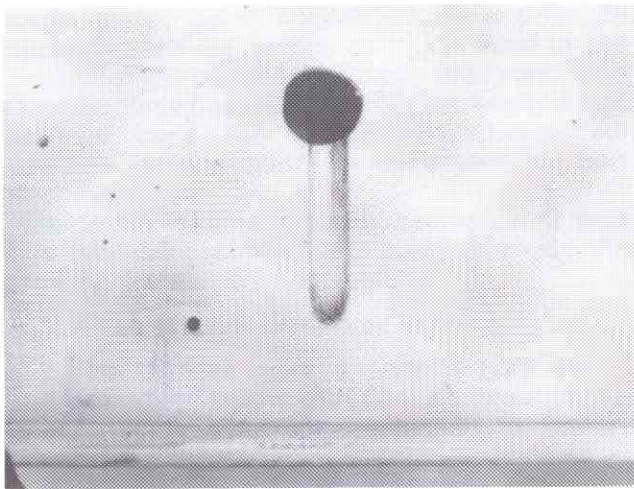


Figure 1

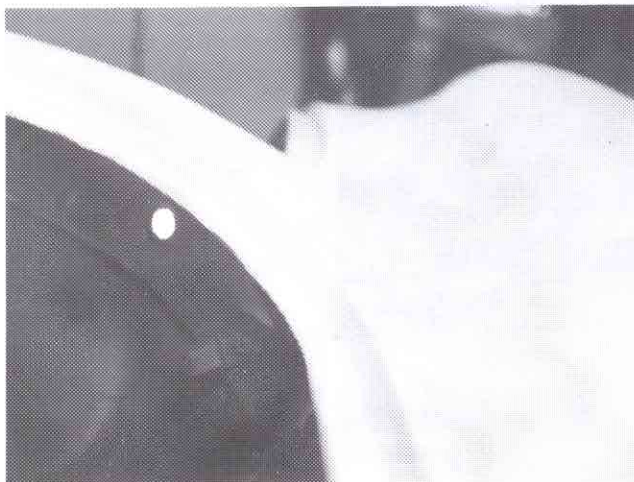


Figure 2

## 1956-57 CORVETTE CARPET

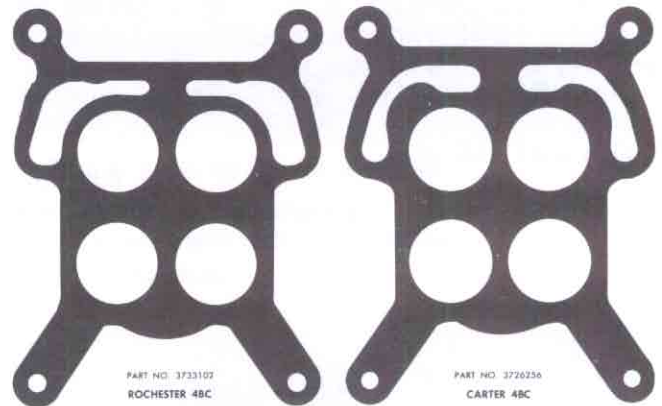
During the past year and a half I have observed many samples of reproduction carpet for 56-57 Corvettes. To my knowledge there is no carpet reproduced that is even close to the original carpet. The original carpet was an exceptionally tight weave loop pile with multiple heights on the loop. The difference between the high and low loop is approximately  $\frac{1}{32}$  of an inch. The original carpet shows no particular pattern due to the multiple heights of that weave. You will also note that higher weaves are bulkier on the face of the carpet.

All of the reproduction carpet that I have observed, the loop is exactly the same height and there is a definite weave pattern.

If anyone knows of original carpet, if you would send me a sample, I would compare it to the original carpet that was removed from our '56 and send you a report.

Larry Richter  
Western 56-57 Tech Director  
P.O. Box 328  
Coos Bay, Oregon 97420

### FOUR BARREL FLANGE GASKET



3.725

372

©-1989  
Chevrolet Motor Division  
General Motors Corporation

## PARTS IS PARTS!

I'm sorry, but I no longer suffer a fool easily. The yuppie matching number freaks are getting to me. We're seeing properly equipped beautiful cars going begging because all the numbers don't match while poor cars with matching numbers bring undeserved bucks. This disease started with Corvettes and other big block Chevys and has spread now all over the sixties and seventies cars.

Do you think maybe some people who lack experience and can't tell a good restoration from a bad one have found a crutch using numbers as a criteria instead of quality?

Rader's Relics  
Winter Park, Florida