

COLOR NAME UPDATE

Noland Adams

New 1954 information: Several brand-new 1954 Corvettes were photographed on the Harbour Freeway in Los Angeles. Several black-and-white photos had been seen back in the early Seventies, but never any in color. We always wondered if they were green, blue, red, black, orange, or what?

When I began writing for Automobile Quarterly, I gained access to Chevrolet's files. There, I found many color transparencies, including photos of the '54's on the freeway in L.A., dated March 18, 1954.

For the first time, we knew the color of the "dark" Corvettes. There was a total of 27 '54's in the photo: 15 were white, 8 were red and 4 were black. This photo was so important that it appeared on the cover of the Winter 1977 issue of The Corvette Restorer, NCRS's fine publication.

Where are those red and black '54's now? The white cars could be almost any '54. Surely, the red and black cars were specially painted at the factory for this occasion.

Now, we have an idea, for two cars have been located which are probably from that group. The first is E54S001168, painted black and located in California. Is this the first Corvette painted a color other than white?

The other is E54S001174, painted red and located in Iowa. Okay, members, let's keep an eye open for other colored 1954 Corvettes near these serial numbers.

1958 and 1958: Recently, we have seen '58's and '59's with the name "YELL." written in the trunk. (If you do not know about the color name location, the article first appeared in Volume 1, Number 2, and there have been several updates. Write to SACE editor Roy Braatz for information on copies of this article.)

Panama Yellow was a 1958 color, signified by "YELL." in the trunk. This has been proven by the examination of several examples.

Recently, a couple of '59's have appeared with "YELL." written in the trunk. I assumed they were hold-overs with a 1958 Panama Yellow paint job. However, I was recently visiting Rick Gower, and his '59, which was originally painted Classic Cream. To my surprise, there in the trunk was "YELL."

In summary, I must conclude that "YELL." in a '58 means Panama Yellow. However, when it is seen in a '59, it means Classic Cream.

No wonder it took us a long time to run down these details. There were only 265 all-Panama Yellow 1958 Corvettes. There were only 190 Panama Yellow - white cove combi-

nation 1958 Corvettes. Rarer yet is Classic Cream; there were only 134 1959 Corvettes so painted.

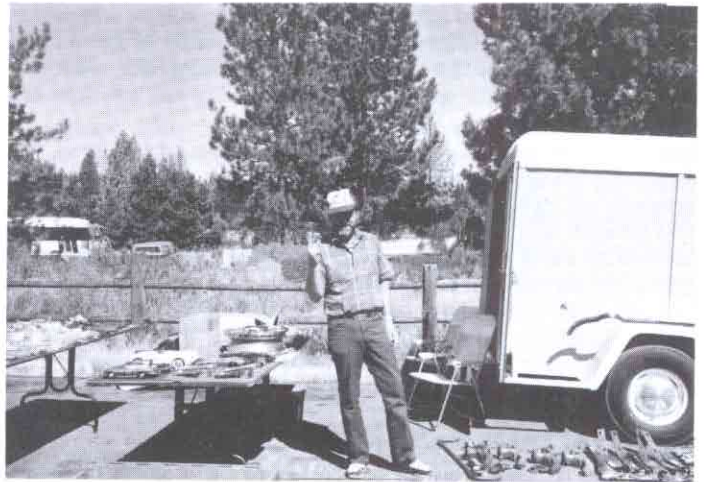
Enjoy those old Corvettes!

Later, Noland

To the charter member who had a note in Vol. 3, No. 2, page 8: Amen Brother! Wave on!

(Mike McCagh, did you happen to read that note?)

—TOM PARSONS
Oklahoma City



SACE MEMBER Lanny Johnson... still selling Straight-Axle parts (or they could be Nash parts!)



SACE MEMBERS Ken Wiechman and Rachelle. (He never throws away anything... he sells it!)