

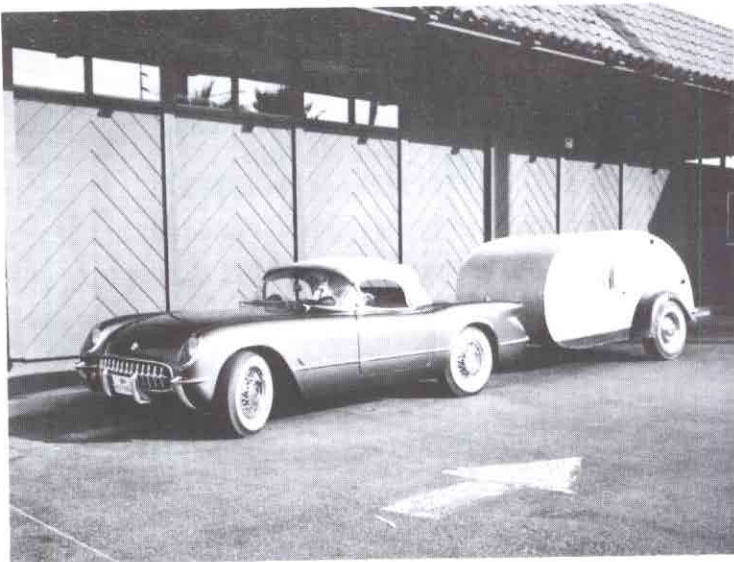
EDITOR'S PAGE

By Roy Braatz

Merry Christmas to all and here's hoping you find that NOS part under the tree. My wife and I are looking forward to our National Virginia meet. Talking to you eastern members and picking your brains on your knowledge of early Vettes can be expected of me. My wife and I are driving out in our 1955 pulling a 1947 tear drop trailer which we plan to sleep, cook and live in along the way to better see the U.S.A. in our Corvette Chevrolet.

And nothing would make this trip better than to meet members along the way. After Virginia we're going on to New York, Pennsylvania, Illinois and then back on 80.

If you would care to meet us as much as we would to meet you, please write us giving your address, telephone number and time of day to call and we'll try our best to stop by. Hope to be hearing from you!



ROY AND MARY BRAATZ'S ACCOMODATIONS

HEATER SWITCH

By Roy Braatz

Figure 1 is a heater switch bought from a Corvette supplier as a replacement for the original that is no longer available. It has four connections and no ballistor. To know if a Vette has one installed, pull the knob out tightly and the heater motor will run.

The original, having two connections and a ballestor, will not run the heater motor when the knob is held out. If you have or can find the original assy that is usually bad because of a broken or rusted cable, then simply remove the back cover from the replacement switch and put it on the original front switch assy. Now you have a 99% original-looking and functioning heater switch. Stay warm and dry!

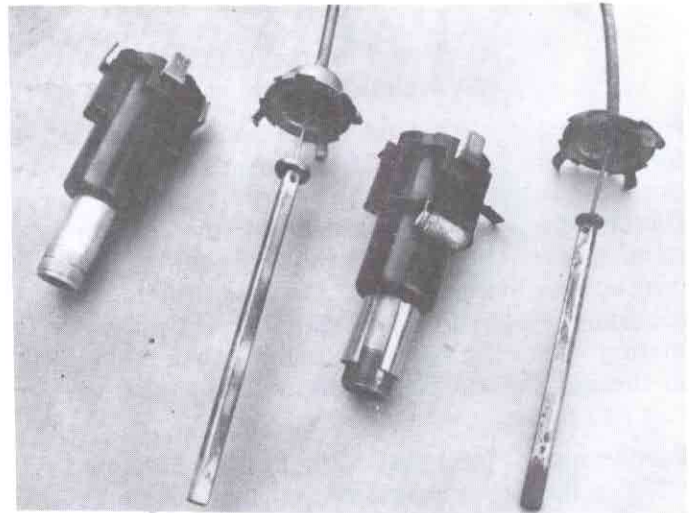


FIG. 1 REPLACEMENT ORIGINAL

Know Your Officers

President Noland Adams
 Vice President/Editor Roy Braatz
 Treasurer/Secretary Lucy Badenhoop
 Photographer Roy Braatz, Jr.
