

## 1.1. VEHICLE IDENTIFICATION NUMBER (VIN)

The VIN is a unique number assigned to each vehicle on the assembly line. It consisted of four parts.

NOTE: the first two parts reversed positions starting 1960.

First was the model designator for Corvette:

|              |        |
|--------------|--------|
| 1953-54      | "E"    |
| 1955 six cyl | "E"    |
| 1955 V-8     | "VE"   |
| 1956-57      | "E"    |
| 1958-59      | "J"    |
| 1960-62      | "0867" |

Second was the model year: 1953-59 is two digits; 1960-62 is one.

Third was an alpha indicating the GM assembly plant:

|         |     |             |
|---------|-----|-------------|
| 1953    | "F" | Flint MI    |
| 1954-62 | "S" | St Louis MO |

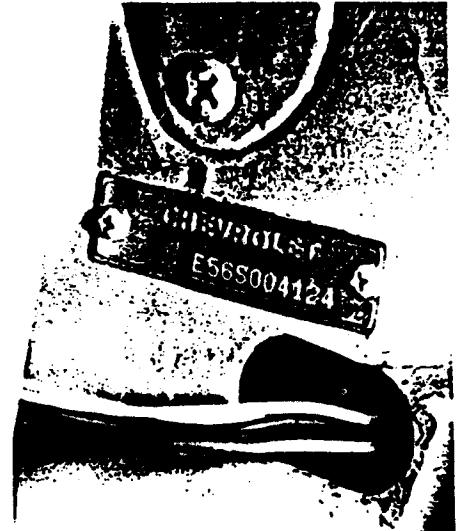
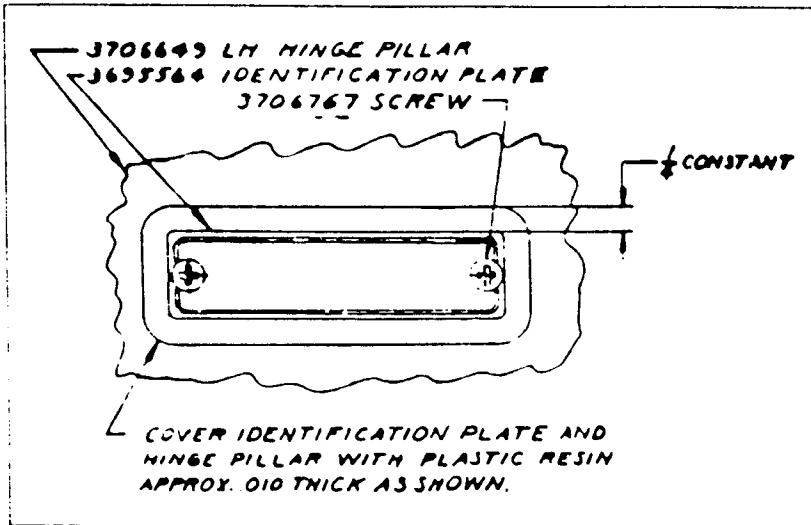
Fourth was the sequential serial number: six digits all years.

|      | START  | END    | EXAMPLE (#234 of each year) |
|------|--------|--------|-----------------------------|
| 1953 | 001001 | 001300 | E53F001234                  |
| 1954 | 001001 | 004640 | E54S001234                  |
| 1955 | 001001 | 001700 | VE55S001234                 |
| 1956 | 001001 | 004467 | E56S001234                  |
| 1957 | 100001 | 106339 | E57S100234                  |
| 1958 | 100001 | 109168 | J58S100234                  |
| 1959 | 100001 | 109670 | J59S100234                  |
| 1960 | 100001 | 110261 | 00867S100234                |
| 1961 | 100001 | 110939 | 10867S100234                |
| 1962 | 100001 | 114531 | 20867S100234                |



## 1.2. VIN PLATE

The VIN plate is a small metallic plate containing "CHEVROLET" and the VIN.



Very early 1953 plates are made of magnetic stainless steel with attachment holes drilled by hand. Later plates are of aluminum with machine stamped holes.

1953 plates were coated with plastic resin (including screwheads) to deter removal.

1953-55 plates were installed with two Phillips head screws in the driver door jamb under the windshield post.

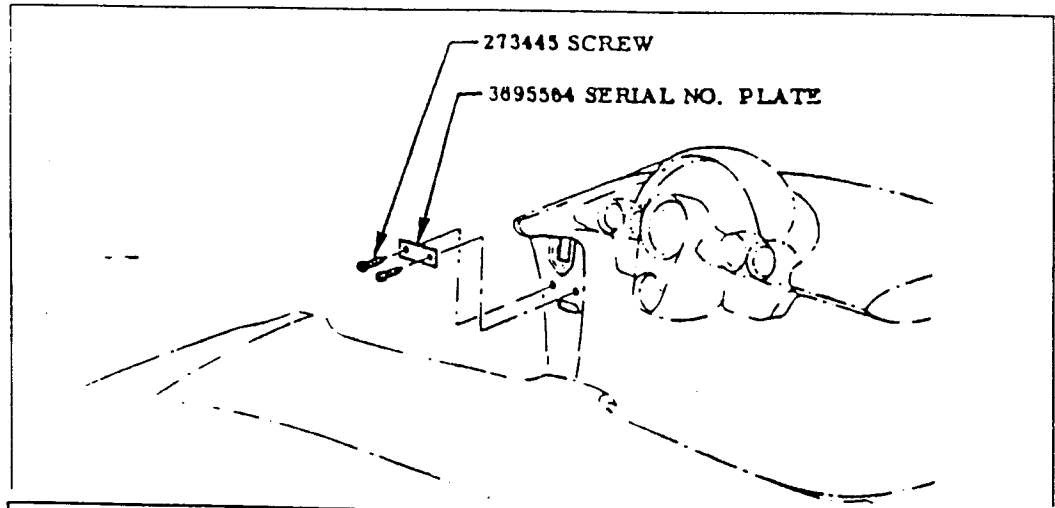
1956 thru early 1960 plates moved to just below the upper hinge.

1960-62 plates moved to the steering column, about 13 inches rearward of the steering gear housing. These plates were welded in two places (where the screws had been) to the steering column mast jacket. Standing on the driver's side, the numbers read correctly.

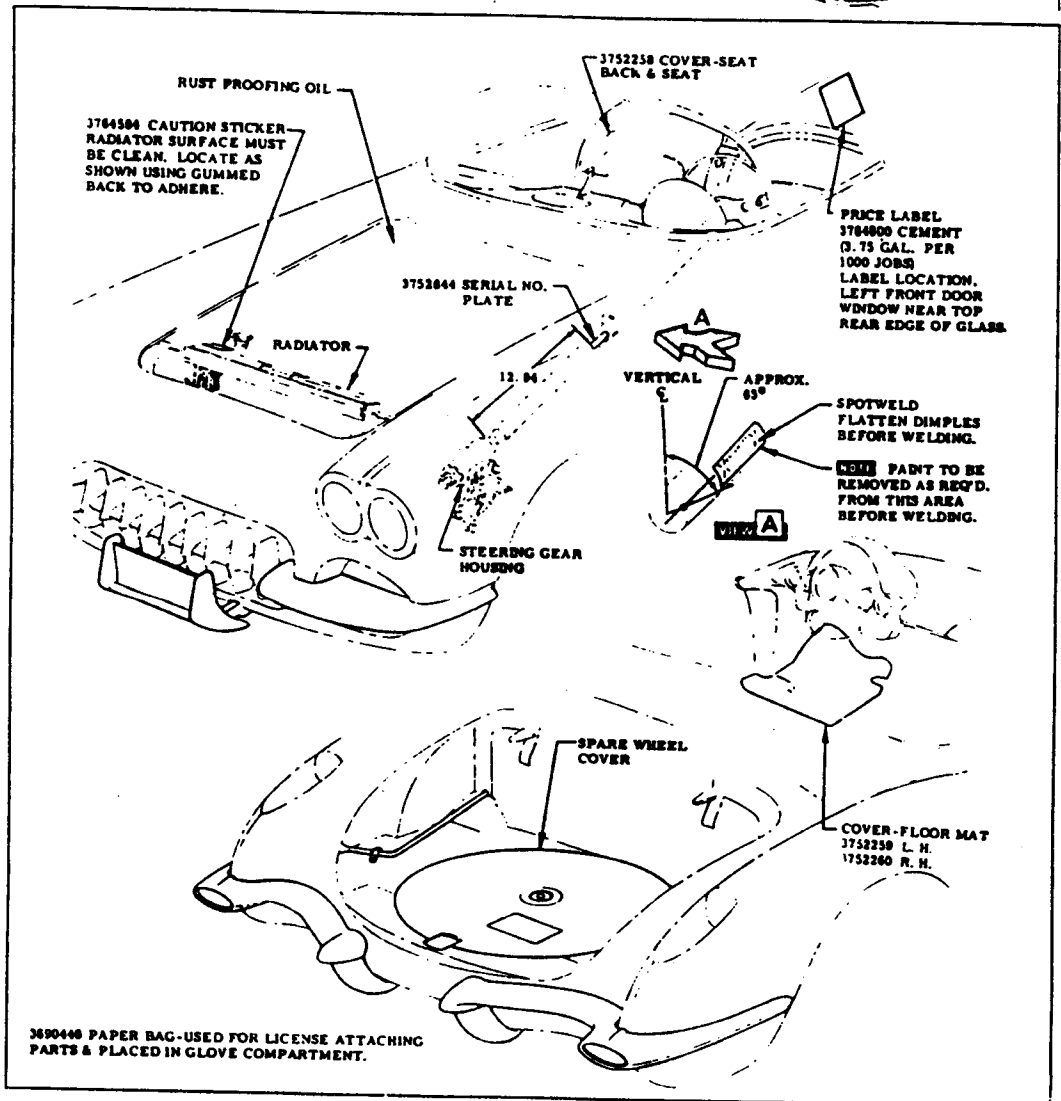


VIN PLATE LOCATION

1956 THRU  
MID 1960



MID 1960  
THRU 1962



1.3. VIN REFERENCES:

Adams pages 92, 139, 157, 165, 255-6

Aquia Creek Corvette Club, Oct 89 Newsletter, "VIN Plate Locations"

NCRS Specifications, page 6

