

OFFICIAL PROGRAM
ONE DOLLAR

FIRST ANNUAL

Sonoma Summer SPORT

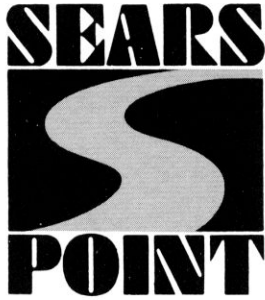


Penhite
July 19-20

CHAMPIONSHIP SPORTS CAR RACES



SEARS POINT
International Raceway



1969 INTERNATIONAL RACEWAY SCHEDULE OF EVENTS

Date	Event	Sanctioning Body
August 10	150 Mile Stock Car Road Race	NASCAR
September 6 - 7	125 Mile, National Motorcycle Road Race	A.M.A.
September 20 - 21	Trans-American Sedan Series Event	S.C.C.A.
November 29 - 30	10th Annual 4-hour Endurance Race	S.C.C.A.

(This is a basic schedule of events and is subject to supplementation at a later date.)

OFFICIAL PROGRAM

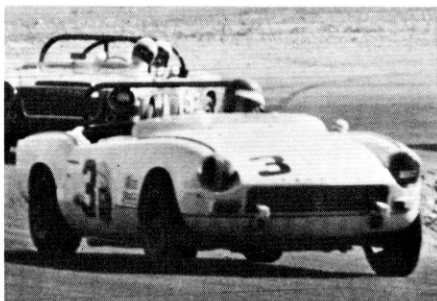
Design & Production R. F. Advertising, San Francisco, Calif.

Cover Design Nick Pendleton

For advertising in the Sears Point International Raceway Sport Car Race Program, contact: Bob Frisch, R.F. Advertising, 10 Beale Street, San Francisco, California 94105. Phone [415] 982-6584.

MARIN SPORTS IMPORTS

TRIUMPH
A WINNER ON
THE RACEWAY
AND ON THE
FREEWAY



BEFORE YOU SEE
EUROPE, SEE US ABOUT
THE TRIUMPH OVERSEAS
DELIVERY PLAN

SALES . SERVICE
PARTS . ACCESSORIES

923 FRANCISCO BLVD.,
SAN RAFAEL, CALIFORNIA

PHONE 453-1262



Rich Sloma's Stinger leads some pretty big stuff through 2.

(Photo by Antoni Cortes)

FIVE POINTS

Continental 
TIRE IMPORTS

2115 EL CAMINO
 REDWOOD CITY, CALIF.
 TEL: 365-0280

184 EL CAMINO
 MILLBRAE, CALIF.
 TEL: 692-1773

ABARTH - AMCO - BECK

 "THE ULTIMATE SOURCE"
 Everything for Racing, Touring or Rallying on or off the road.
INTERNATIONAL MOTORING
 ACCESSORIES PARTS AND SERVICE
 770 EL CAMINO REAL, SAN CARLOS, CAL. / 592-6464
CURTA - COLORTUNE - CARELLO

FORMULA 1 - KONI - HALDA

Telephone 673-4896

alfa
 romeo

**AUTO
 ITALIANA**

*New 1750
 fuel injected
 models are
 now at*

727 Van Ness Avenue
 San Francisco

FIRST ANNUAL SONOMA SUMMERSPORT - FACTS

TYPE RACE: Sports Car Club of America National Championship Points races for all 21 SCCA classes including Production, Sedan, Sports/Racing and Formula.
RACE NAME: Sonoma Summersport
RACE LENGTH: 6 races, each 30 minutes in length
RACE DATES: Saturday, July 19 and Sunday, July 20.
RACE SCHEDULE:

RACE SCHEDULE

Saturday, July 19, 1969

7:00 A.M.	Course opens
9:15 - 9:45	Practice and Qualifying Race 1
9:55 - 10:25	Practice and Qualifying Race 2
10:40 - 11:10	Practice and Qualifying Race 3
11:20 - 11:50	Practice and Qualifying Race 4
11:50 - 12:45 P.M.	Intermission
12:45 - 1:30	Practice and Qualifying Race 5
1:30 - 2:00	Practice and Qualifying Race 6
2:15 - 2:35	Practice Race 1 (Formula SCCA)
2:45 - 3:05	Practice Race 2 (Formula Vee)
3:15 - 3:35	Practice Race 3 (C S/R, Cp, Dp, Bs, Cs)
3:50 - 4:10	Practice Race 4 (As, A S/R, B S/R, Ap, Bp)
4:20 - 4:40	Practice Race 5 (Ep, Fp)
4:55 - 5:15	Practice Race 6 (Gp, Hp, Ds, D S/R)

Sunday, July 20

8:00 A.M.	Course opens
9:15 - 9:45	Warm Up Race 1 & 2
9:50 - 10:25	Warm Up Race 3 & 4
10:40 - 11:15	Warm Up Race 5 & 6
11:30 - 12:00	Race 1 (Formula SCCA)
12:15 - 12:45 P.M.	Race 2 (Formula Vee)
12:45 - 1:30	Intermission
1:30 - 2:00	Race 3 (C S/R, Cp, Dp, Bs, Cs)
2:15 - 2:45	Race 4 (As, A S/R, B S/R, Ap, Bp)
3:00 - 3:30	Race 5 (Ep, Fp)
3:45 - 4:15	Race 6 (Gp, Hp, Ds, D S/R)



ADMISSION: \$2.00 Saturday, \$4.00 Sunday, \$5.00 entire weekend. Children under 12 free when with an adult. Servicemen with I.D. - \$1.00 off per ticket.

PADDOCK PASSES: Available in spectator areas at \$5.00 each.

ORGANIZED BY: Sears Point International Raceway, Inc. (SPIR)

SANCTIONED BY: Sports Car Club of America, Inc. (SCCA)

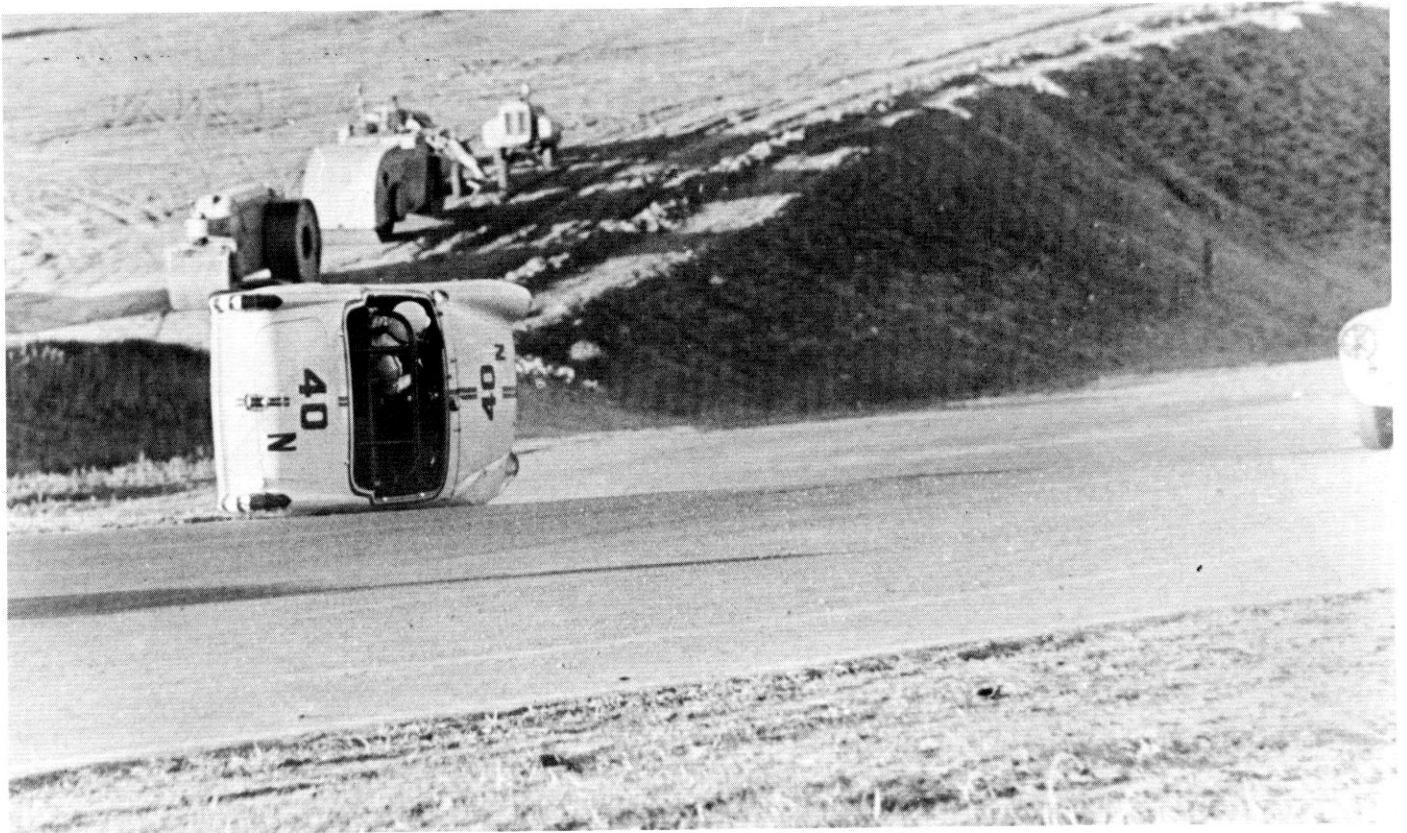
CONDUCTED BY: San Francisco Region, Sports Car Club of America, Inc.

TRACK DESCRIPTION: 12 turn, 2.523 mile asphalt circuit, 40' minimum width, 160' elevation change.

ENTRY: Approximately 200 entries.

POINT AWARDS:	1st 9 points	4th 3 points
	2nd 6 "	5th 2 "
	3rd 4 "	6th 1 "

Note: Points awarded in each of SCCA's 21 classes.



(Photo by W.H. Spencer)

Mommy said there'd be days like this. But 'Hoy Vey'!

**YOU SHOULD SEE THE
OTHER CARS WE SELL!**



LOTUS 61E
'WEDGE'
FORMULA FORD



LOTUS RACING WEST

PREMIER IMPORTS

1272 EL CAMINO REAL • SAN CARLOS • 593-1411

DISTRIBUTOR FOR LOTUS RACING CARS & COMPONENTS
FOR THE WESTERN UNITED STATES

BOB COLE MOTOR IMPORTS LTD.

444 EL CAMINO REAL
SAN BRUNO 583-5032

The Home of Austin America



**Peninsula
British
Cars**

**805 El Camino Real
Palo Alto
326-9880**

★ SALES ★ SERVICE ★ LEASING

SPiR Spectator Survey

Your views and opinions, likes and dislikes, whatever, are the only ones we at SPiR really care about. To help us make everything good, pure and groovy, please fill out and mail this strange little form to: Pleasure Director, SPiR, Hiways 37 & 121, Sonoma, Ca. 95476.....(Yes, you may call this a gripe sheet)

Your age? _____ Sex? (Please don't say "yes") _____ Occupation? _____

How long? _____ Married? _____ Family with you today? _____ How many kids? _____

How old are they? _____ How long have you been watching races? _____

What kind of racing do you prefer? _____

What make of car(s) do you own? _____ What make(s) would you like to own? _____ What brand of gasoline do you usually use? _____

How about oil? _____ Spark Plugs? _____ Tires? _____ Would you like to use a Credit Card to gain admission here? _____ If so, what card? _____

Do you spectate at other raceways? _____ Which ones? _____

Have you ever raced? _____ What kind? _____

How long have you lived in your present general location? _____ How did you learn about today's race? _____ Was the race too long? Too Short? _____

Did you drive to get here, or just ride? _____ How many persons were in the car you came in? _____ What time would you like to see the feature event start? _____ End? _____

What would you like to see in our concession stand that isn't already there? _____ How often do you wash your car? _____

How about wax? _____ What kind of wax? _____ Do you use an additive? _____ What kind? _____

Do you think our admission prices are in line? (be honest!) _____ What did you dislike most about our track? _____

What did you like most about our track? _____

What is the one most important thing you would like to see done at SPiR to make you more comfortable? _____

_____ Tired? _____ Me, too!!

You don't have to fill in your name and address. If you do, rest assured your name will not be passed on to commercial sources, but will be added to SPiR's mailing list so that you might receive our newsletter and keep abreast of things.

Name _____

Mailing address _____ City _____ ZIP _____

THANK YOU FOR ALLOWING US TO MAKE OUR PLEASURE YOUR PLEASURE

Collect a whole set of SPIR Programs from preceding races

- Inaugural National Sports Car Races -
March 29-30
- NASCAR "Weiber 150" Road Race - June 7-8
- Continental '49er Formula SCCA -
June 21-22

Sears Point Programs
10 Beale St.
San Francisco, Ca. 94105

\$1.00 plus 25 cents for handling & postage

Name _____

Address _____

State _____

Zip _____

NOR



CAL AUTOMOTIVE INC.

CUSTOM AUTO & MARINE ENGINES -
ENGINE BLUEPRINTING -
MAGNAFLUX ZYGLO SERVICE

1215 California Drive, Near Broadway
Burlingame, California 94011 342-7649

ABEL

CHEVROLET • PONTIAC • BUICK

280 North Front
Rio Vista, California
374-6317

Winning Doubleheader
SWEDEN DID IT AGAIN!
SAAB 99
THE CAR OF THE 70'S

All New



All Safe

A pitch of excellence has this exciting tab.
Test drive this car and you will switch to SAAB.

SWEDISH MOTORS, INC. 383-2770
489 MILLER AVE., MILL VALLEY, CALIFORNIA

10 Minutes from Golden Gate

GERMANY'S PRIDE

BMW 1600; 2002; 2000; 2500;
2800; 2800 c's

MANUEL



Automatic

For those who like a choice, we
give it here to you. The thrilling car is BMW.

SWEDISH MOTORS, INC. 383-2770
489 MILLER AVE., MILL VALLEY, CALIFORNIA

**STA-POWER
IS HERE!**



BOB BROWN used
Sta-Power to finish
2nd at Sears Point
Continental '49er
Formula A Race
June 21-22

BOB BROWN says: "ON RACEWAY OR
HIGHWAY STA-POWER KEEPS THE ENGINES
IN MY CARS CARBON FREE . . . ADDS MORE
POWER AND BETTERS MILEAGE . . . it can
do this for you, too."



STA-POWER CONDITIONERS

56 Harbor St., San Rafael, Calif. 94901 (415) 453-1900
DISTRIBUTOR INQUIRIES INVITED.

SCCA National Championship Racing - Professional

RACING'S FARM CLUB?

by Al Auger
Motor Sports Editor
Hayward Daily Review



Al Auger

The Sports Car Club of America now has three definite areas of road racing - each with its own purpose. At the lower level, you have the bulk of licensed SCCA drivers, the club racer or "weekend warrior". This is the race-for-fun-bunch and forms the nucleus of the club's membership.

At the top of the ladder is the strictly professional driver who participates in the Trans-American Sedan series, the Canadian-American Challenge Cup series and the Continental Championships for open-wheel formula cars. At this level you will see competing such well-known names as Parnelli Jones, Dan Gurney, Sam Posey, John Cannon, Bruce McLaren and Denis Hulme.

In the middle is the semi-professional SCCA member-driver vying for the coveted title of SCCA National Class Champion. I say semi-professional, for, although he is not paid directly by the sponsor or track, he does have access to fringe money. This is usually called accessory or incentive award money. Most of the major manufacturers, accessory and oil makers will pay the top placing cars in most classes using their products (and sometimes not).

How does one become eligible to compete in the National races. First, you must be a member of SCCA and hold a National Competition License. The country is broken up into six separate SCCA divisions, and each driver must race in the National races in his division. He is allowed to drive in no more than two races outside his particular division. SCCA then determines each driver's placing in the final points standing on the driver's accumulation of points earned in his best performance in a maximum of six National races. His points are earned on his finishing position in each race; the points are awarded on a 9-6-4-3-2-1 basis.

In November, the Sports Car Club of America puts on its annual American Road Race of Champions held each year at either Daytona Beach, Florida or Riverside, California. This year it will be at Daytona Beach. The top three points standees in each class from each division are invited to run at the ARRC. From this personal joust with champions from every corner of the U.S., comes the National Champion for each SCCA classification.

The ARRC is fast becoming a prestigious event for manufacturers - and not, strangely enough, just automotive-related companies. The ARRC is sponsored by the makers of Nine Flags Toiletries for men, much in the same manner the Can-Am is by Johnson Wax. Also, the car makers and

accessory makers find this to be a very important outlet to promote their products (if they win, naturally).

As you can see, this type of "semi-professional" road racing can be a natural training ground for budding professional drivers. The competition is tough and the end result can mean much publicity and no little monetary reward for the winning drivers. Some are already making it on the professional circuit. Locally, Ron Grable of Mt. View went from Class "A" Sedan National champion to driving for the Javelin Trans-Am team.

At first, it may seem a bit vague, but, you the spectator benefits as well. Quite a number of these drivers are close friends and have been my competition many times in the past. It's amazing to watch, as they seriously enter into National Championship competition, how their driving becomes so much better, i.e., faster, tougher and cleaner and their cars are so much better prepared.

One driver told me, on a winning weekend he can make as much as \$300. Now, this is not the thousands of dollars one can make in the big-time races, but it does help keep the Sting Ray or Sprite running just that much longer and better. This means the equipment is better, the car is faster - and safer - and they can compete on much more even level against some of the more affluent drivers.

Although what you are witnessing out there on the race track today is normally classified as "amateur" racing by most of the not-so-knowledgeable sports editors of the various medias - it is far from the truth. Would it surprise you to know that many of the cars on the track today are maintained at costs of near twelve to fifteen thousand dollars a year? Some of the "little" cars cost their owners three to five thousand dollars a year to keep running.

Many of these drivers, then, are competing for something much more than a trophy and few hundred dollars in "incentive awards". I know of two or three right now, who are on the verge of picking up a substantial pro ride in the near future. Many have told me, in the course of an afternoon's conversation in the pits, that they are going to get a professional ticket (license) some day. Whether they do or not is not all that important; to the spectator, at any rate.

What is important, is that it means all that much finer racing for you and a possible "busman's holiday" for today's winners to Daytona Beach, and the American Road Race of Champions.

RACE 1

Formula A

No.	Color	Car	Driver	Region	Hometown	Entrant/Sponsor	Displ.
15	Red	Spartan/MK 1	Angus MacDonald	San Francisco	Fair Oaks	Same	2600cc

Formula B

9	Silver	Lotus/Cosworth	Gordon Strom	San Francisco	Los Gatos	Los Gatos British	1600cc
22	Blue	Brabham	Gari B. Andreini	San Francisco	Santa Rosa	Espinosa Auto Body	1600cc
24	Blue/White	LeGrand	Michael Hansen	San Francisco	Belmont	M & R Racing	1600cc

Formula C

11	Red	Forsgrini	Bob Ernst	San Francisco	Santa Clara	Aerodyne Eng.	1100cc
14	Bronze/wte	Lotus	Leland Sheldon	San Francisco	Reno	Vacation Lodge	1100cc
29	Red	BMC	Edward W. Brousseau	San Francisco	Richmond	same	1100cc
61	Red	Lotus	Lou Pavesi	San Francisco	Los Altos	Hygh Performance Eng.	1100cc
81	Orange	Cooper	Ray Martinelli	San Francisco	Santa Rosa	Autohaus Racing	1100cc
98	White	Elva	Dan Feagin	San Francisco	Greenbrae	Racing Unlimited	1100cc

Formula Ford

6	Blue	Winkelmann	Skip Adrian	San Francisco	Fresno	Tom Elliott	1600cc
10	Yellow	Winkelmann	Bill Schmidt	San Francisco	Martinez	Metropolitan Assoc.	1600cc
16	Blue/Yell	Lotus	Bill James	San Francisco	Modesto	LaCore Tire Co.	1600cc
18	Red	Winklemann	Ken Hazlett	San Francisco	Berkeley	Same	1600cc
19	Blue	Lotus	Keith C. MacMillan	San Francisco	Livermore	Same	1600cc
33	Yellow	Lotus	Jim Nugent	San Francisco	San Francisco	Bay Area Racing	1600cc
39	Red	Lotus	Gary Johnson	San Francisco	Turlock	Same	1600cc
41	Yellow	Lotus	Pete Swan	San Francisco	Campbell	Same	1600cc
74	Yellow/Red	Merlyn	Ira W. Morrison	San Francisco	Livermore	The Sprint Shop	1600cc
89	Red	Titan	Ernie Haze, Jr.	San Francisco	Palo Alto	Mary D. Haze	1600cc
97	Red	Merlyn	Jim Busby	Cal Club	Newport Beach	Smothers Bros.	1600cc

RACE 2

No.	Color	Car	Driver	Region	Hometown	Entrant/Sponsor	Disp.
1	Yellow/White	Zink	Don Bush	S.F.	Los Altos	Art Strange Foreign Car	1192
3	Red/Wht/Blue	Zink	Larry Wilson	S.F.	Sacto	Same	1198
7	Red	Bobsy	Bob Brown	S.F.	Oakland	Same	1200
8	Blue/Gold	Crusader	H. T. Waller	S.F.	Redwood City	Wallerby Racing	1200
21	Silver/Blue	Crusader	John MacIntyre	S.F.	Santa Rosa	Pete's Body Shop	1192
23	Red	Autodyn.	Gus Skarakis	S.F.	Carmichael	Same	1192
39	Purple	Crusader	Mac Cox	S.F.	Santa Clara	Same	1200
44	Yellow	Zink	Don Magdanz	S.F.	S.F.	Peter Jones	1192
53	Shocking Pink	Crusader	Harriet Gittings	S.F.	Fremont	Wheelsport	1192
63	Nassau Blue	Crusader	J. S. Van Pelt	S.F.	Sacto.	Same	1192
66	BRG/Gold	Autodyn.	Glen Biren	S.F.	San Jose	Same	1192
68	Green	Autodyn.	David Acker	S.F.	Pleasant Hill	Anderson Shell	1192
71	Yellow	Sarzan	Gary Gooch	S.F.	San Lorenzo	The Sprint Shop	1098
76	Blue/Gold	Autodyn.	Bruce Belcher	Oregon	Boise, Idaho	Norm Bishop V.W.	1200
81	Red/Yellow	Zink	Robert Hall	CSCC	Oakland	Robert Hall	1192
85	Yellow/Blk	Crusader	Ken Tarbet	S.F.	Livingston	Rudis German Car	1192
86	Orange	Lynx	James Herlinger	S.F.	Woodside	Performance Eng.	1192
88	Red/Yellow	Lynx	Terry Gough	S.F.	San Leandro	Autobody & Perform Inc.	1192
91	Orange	Autodyn.	Stuart Fisher	S.F.	San Rafael	Carolyn Fisher	1192
99	Orange	Crusader	Bill Fitch	S.F.	Los Gatos	S.J. Crane	1192

RACE 3

C Production

No.	Color	Car	Driver	Region	Hometown	Entrant/Sponsor	Displ.
1	Tangerine	Porsche	Alan Johnson	CSCC	Corona Del Mar	Porsche Car Dist.	1991cc
2	Tangerine	Porsche	Milt Minter	CSCC	Simi Valley	Porsche Car Dist.	1991cc
72	Green	Sunbeam	Chris Bender	S.F.	Reno	Same	4160cc
98	Black	MGC	Ed Leslie	S.F.	Monterey	British Motors, S.F.	3000cc

D Production

9	Red	Lotus	Richard H. DaPont	S.F.	Aptos	G.W. Downs Auto	
15	Green	Lotus	Jerry Scheberies	S.F.	Moroga	Scheberies, Inc.	1498cc
17	Yellow	Lotus	G.J. Wimberly	Hawaii	Honolulu	Same	1495cc
44	White/Blue	Datsun	Frank Monise	CSCC	El Segundo	B.R.E.	2020cc
46	Wte/Orange	Datsun	John Morton	CSCC	El Segundo	B.R.E.	2020cc
63	Blue/Silver	Triumph	Norman A. Jenks	S.F.	San Jose	Same	2138cc
65	White	Yenko/Stinger	Richard Finch	Pan American	Santa Maria	Same	2750cc
66	Yellow/Blk	Triumph	Roy Parker	S.F.	Monterey	Alva Rodrigues	2187cc
99	Red	Triumph	Bob McGrew	S.F.	S.F.	Same	2138cc

B Sedan

7	White	Porsche	Walt Maas	S.F.	Los Altos	Gus Mozart	1991cc
59	Green	Porsche	Del Bolton	S.F.	Redwood City	Same	1991cc
67	Blue	Porsche	Don Zacharie	S.F.	San Jose	Norm Anderson	1991cc
97	Red	Alfa Romeo	Vic Provenzano	CSCC	Van Nuys	Provenzano & Borri	1600cc

C Sedan

5	Orange/Blk	Austin	Bob Tingleff	CSCC	Long Beach	Same	1293cc
11	Green/Gold	Austin/Cooper	Larry R. Miller	Oregon	Eugene	MTR Racing	1293cc
26	Orange/Wte	Austin/Mini	Judy Kondratieff	S.F.	Lafayette	Autosport of Vallejo	1293cc
41	Yellow	Lancia	Browne Goodwin	S.F.	Culver City	Browne Goodwin Racing	1298cc
56	Red/Gold	Austin/Cooper	Ken Schley	CSCC	Santa Barbara	Mini Tech Eng.	1275cc
74	Blue	Mini Cooper	Rone Moore	CSCC	San Diego	B.M.C.	1293cc
75	White	Mini Cooper	Dave McCartney	S.F.	Menlo Park	Thor Thorstenson	1293cc
89	Green	Austin/Cooper	John M. O'Malley	S.F.	Los Angeles	Same	1275cc

C Sports Racing

19	Silver/Blue	Lola/Climax	Jack Cavanaugh	S.F.	Vacaville	Ambassadors	1220cc
21	Green/Silver	Lotus	Randy Lewis	S.F.	Sunnyvale	Same	1290cc
68	Yellow/Blk	Elva	Butch Owsley	S.F.	Aptos	Bunny Ribbs	1220cc
73	Blue/White	LeGrand	Bill Overhauser	S.F.	Sacramento	Overhauser Racing	1300cc

RACE 4

A Sports Racing

No.	Color	Car	Driver	Region	Hometown	Entrant/Sponsor	Displ.
17	White	Genie	Merle Brennan	San Francisco	Reno	Merle Brennan Auto	5800cc
20	Blue	McLaren	Eric L. Haga	Northwest	Seattle	Sealth Aero Marine	365CID

B Sports Racing

10	White	Porsche	Alan Johnson	CSCC	Corona Del Mar	Don Burns Racing	1991cc
33	Silver	Porsche	Cliff Menke	San Francisco	Menlo Park	Art Stange Foreign	1996cc
51	Orange	VW Special	Jerry Pacheco	San Francisco	Carmichael	Ted Blake VW	2000cc
77	Blue	Lotus	Leon Robertson	San Francisco	Sacramento	Comp. Lab	1977cc
96	Persimmon	Elva	Peter F. Young	San Francisco	Berkeley	Global Ventures	1600cc

(Race 4 continued)



One of us has to be right!

(Eilers photo)



The famous SCCA double

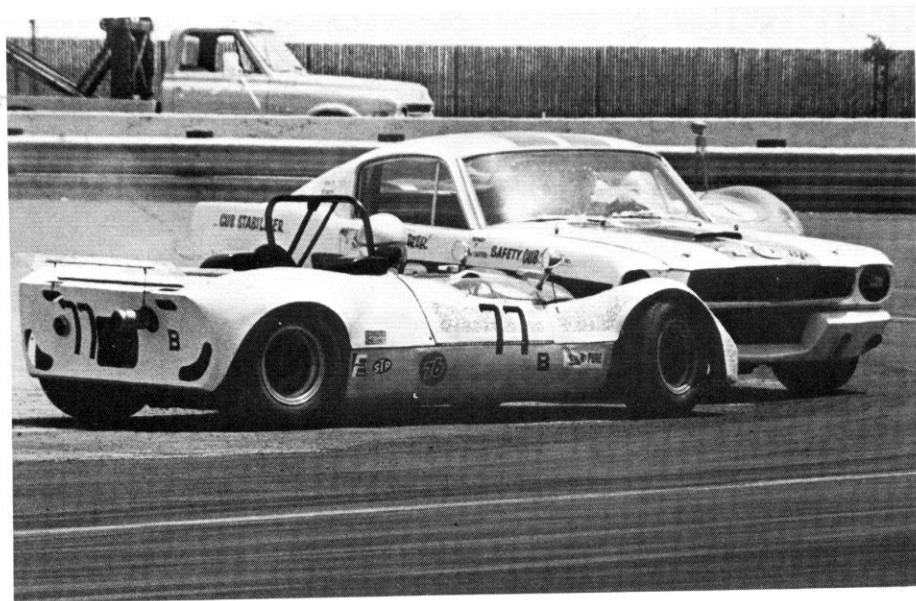


Lifting a wheel the hard way

(Cortes photo)



Stay away



Hi there! My name is Sue!

(Forrest photo)



Even Formula Vees



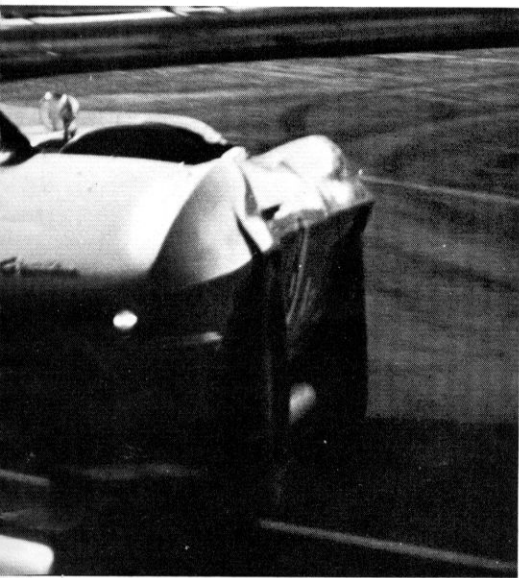
le reverse crunch routine.

(Spencer photo)



Big bore stuff

(Feuerhelm photo)



ay, wall!

(Kausen photo)



Mini - Meet - Mini

(Sands photo)



et slideways in Turn 2.

(Spencer photo)



Gook lookin', pidgeon-toed Mohair Sam

(Forrest photo)

RACE 4 (CONTINUED)

A Sedan

No.	Color	Car	Driver	Region	Hometown	Entrant/Sponsor	Displ.
1	White/Rad	Ford/Mustang	Mary Ellen Wilkins	San Francisco	Oakland	Same	289CID
11	Red/Black	Camaro	John Silva, Jr.	San Francisco	San Lorenzo	Same	302CID
22	Blue/White	Mustang	William Maier	San Francisco	Hayward	Maier Racing Ent.	294CID
26	Black	Falcon	Jerry Meinecke	CSCC	Fresno	Daves Auto Supply	5000cc
28	White	Camaro	John Treder	San Francisco	Santa Clara	Same	5000cc
61	Blue	Camaro	Tony Settember	CSCC	Mill Valley	Washburn Chevrolet	5000cc
64		Baraccuda	Robert Hampton	San Francisco	Daly City	Turner Tile Co.	6997cc

A Production

7	Silver	Corvette	Glenn Carsten	San Francisco	Oakland	Abel Chevrolet	7000cc
8	Blue	Corvette	Herb Caplan	San Francisco	Sacramento	Bob Frink Chev.	427 CID
19	Blue	Stingray	Bud Willner	CSCC	Santa Maria	Hepheastus Racing	6997cc

B Production

0	Tangerine	Porsche	Elliot Forbes-Robinson	CSCC	Glendale	Porsche Car Dist.	1991cc
5	Green	Corvette	Bill Treytl	San Francisco	El Cerrito	Rowell Auto Ser.	5300cc
6	Red/Silver	Cobra	Cliff Mathis	CSCC	Sacramento	J.C. Mathis	4727cc
9	White	Cobra	Bob Allen	San Francisco	Manteca	Manteca Ford	4737cc
27	Blue	Corvette	Rich Sloma	San Francisco	Cupertino	Zinn's Chevy Auto	5400cc
39	White/Blue	Cobra	John Tuttle	San Francisco	Danville	Vic Hubbard Speed	4727cc
40	White/Blue	Mustang	Dick Carter	San Francisco	Hayward	Hayward Ford	289CID
43	Red	Corvette	Bob Dye	San Francisco	Concord	Evileye Club	283CID
45	White/Blue	Corvette	Lee Tompkins	San Francisco	Hayward	A & A Auto Parts	327CID
66	Black	Stingray	Paul Van Walkenburgh	CSCC	Los Angeles	Same	5400cc
74	Brg.	Jaguar	Dudley R. Smolen	San Francisco	Mt. View	Same	4200cc
89	Blue/White	Cobra	Bob Rodgers	San Francisco	Castro Valley	Same	4717cc

1 CASE STA-POWER (SAN RAFAEL) CONDITIONER TO BE AWARDED WINNER OF THE RACE

RACE 5

E Production

No.	Color	Car	Driver	Region	Hometown	Entrant/Sponsor	Displ.
2	Silver	Morgan	Bob Crussell	San Francisco	Folsom	Patricia A. Crussell	2200cc
4	Silver	Morgan	Norman Balzer	San Francisco	Armona	Foreign Automotive	2200cc
6	Green	Porsche	Dr. Forest Young	San Francisco	Fresno	Same	1600cc
7	Red	Porsche	Jim Kilpatrick	San Francisco	Fresno	Jakicpatrick WM Hogue	1600cc
8	Brg.	M.G.	Don Teeter	San Francisco	Fresno	Same	1800cc
9	Red	Porsche	George S. Nolte Jr.	San Francisco	Palo Alto	Say Ray Foreign Auto	1598cc
11	Green	Porsche	Charles Forge	San Francisco	Cupertino	Grahams Auto Body	1600cc
14	Blue	Porsche	Robert S. Jones, Jr.	San Francisco	Palo Alto	Same	1600cc
15	Orange	Porsche	Rudolf P. Urban	San Francisco	Fairfield	Urban's Books	1596cc
21	Orange	Porsche	Bob Tueknott	San Francisco	Castro Valley	Elgins Machine Shop	1600cc
31	Red	Porsche	Werner Brandt	San Francisco	San Francisco	Same	1592cc
38	Brg.	Morgan	R. Raul Rodriguez	San Francisco	San Francisco	Atlas Auto Wreckers	2198cc
41	Red	Triumph	Graham Cooper	San Francisco	Campbell	Same	2138cc
47	Red	Porsche	Harold Kirberg	San Francisco	Mill Valley	Kirberg Motors	1600cc
59	Orange/Blk	Alfa Romeo	Dale MacGowan	San Francisco	Campbell	Economy Imports	1600cc
66	Black	MGB	Merle Brennan	San Francisco	Reno	British Motors, S.F.	1800cc
69	Black	Porsche	Bob Blackwood	San Francisco	Sausalito	Blackwood Racing	1600cc
96	Red	Porsche	Robert L. Harmon	San Francisco	San Francisco	Same	1600cc

F Production

1	Red	Triumph	Terry Hall	CSCC	Pomona	Mueller Fabricators	1298cc
5	Brg.	Sprite	George Klawitter	San Francisco	Fresno	San Joaquin Materials	1275cc
12	Red	Alfa	Paul Oshsner	San Francisco	Sacramento	Same	1300cc
18	Black	Datsun	Dave Madison	CSCC	Van Nuys	Miller Imports	1598cc
25	White	MGA	John F. Crider	San Francisco	Reno	Same	1622cc
26	Orange	Alfa	Paul R. Carrick	San Francisco	San Francisco	Same	1292cc
33	White	Triumph	John Howard	San Francisco	Woodside	International Motoring	1300cc
39	Lime	Alfa Romeo	Jon Norman	San Francisco	Oakland	S. Whitney Griswold	1300cc
46	Blue	Alfa Romeo	Bob Lusk	San Francisco	Novato	Same	1600cc
51	Blue	A-H	David Christoffersen	San Francisco	Richmond	North West Dist.	2600cc
77	Black	MG Midget	Jon Woodnar	San Francisco	Berkeley	British Motors, S.F.	1300cc
95	Blue	Lotus	Norm McCary	San Francisco	Oakland	Allied Fire Prot.	948cc

RACE 6

G Prod.

<u>No.</u>	<u>Color</u>	<u>Car</u>	<u>Driver</u>	<u>Hometown</u>	<u>Entrant/Spons.</u>	<u>Disp.</u>
5	White	Midget	Craig Murray	San Francisco	Murray Racing Ent.	1100
14	Yellow	Spitfire	Paul Coffman	Canoga Park	National Speed Shop	1150
41	Red	Spitfire	Bud Harrington	Mill Valley	Sports Racing Ent.	1147
53	Yellow	Spitfire	Marshall Meyer	Livermore		1147
54	Maroon/Gold	Spitfire	Derrick M. Quon	El Cerrito	Walt MARTIN Motors	1147
55	Bl/White	Triumph Spt.	Gabe Stearns	Mercer Isle.	Gesra Racing	1147
57	White	Spitfire	Don Wixel	San Francisco	Crane Triumph	1147
61	White	Spitfire	Tom McCarthy	Santa Clara	United Auto Wreck.	1147
62	Blue	AH Sprite	P T LeMunyon Jr.	Barstow	Teds Meat Mkt.	1098
66	White	Sprite	Bill Haener	San Carlos		1100

H Prod.

2	White/Blue	Sprite	Richard Moser	Sparks Nev		948
4	Black	Sprite	Mike Ostrov	Richmond	Foreign Auto Parts Parsons Ind A P Duncan	948
10	White	Sprite	Bob G. Williams	Portland		948
34	White	AH Healey	Harry James	Reno		948
37	Gold/White	Sprite	John Marshall	San Mateo		950
40	White	Sprite	Dennis Kenyon	Alameda		948
44	White/Blk	Sprite	Dr. Richard Reid	Lafayette		948
58	White/Org	Sprite	Martin Fogel Jr	Sparks Nev		948
71	Orange	Fiat/Abarth	David Silver	Carmel		850
78	White	AH Sprite	Norman J. Hart	Palo Alto	Calif. Dynamoteter	948
80	Turquoise	Sprite	Al Larrus	Sunnyvale	Economy Imports	948
82	Indigo	Sprite	Robert Boyd	San Francisco		948
84	Whit/Org	Sprite	W J Castagnaro	Sausalito	Autosport	950
93	Red	Sprite	Marcus Nilson	Redwood City		948

D S/R

24	Blue	Un Pequito SAAB	Stan Laskin	Palo Alto	Laskin Racing Ent.	850
30	Gold	Forsgrini	Dale Forsgren	Kirland Wash	Forsgren's Design	850
42	White/Blue	Brian Crosley	Major Bill McCann	Fair Oaks		850
46	Blue/Silver	SAAB	Tom Evans	Santa Barbara		841
75	Red/Silver	SAAB ShortRibs	Jerry Pacheco	Carmichael		850

D Sedan

8	Blue/White	Sunbeam Imp	Al Auger	Richmond	Turn One	875
77	Orange	NSU	Emmett Wilder	San Rafael	A & E Motors	

MARIN MOTORSPORTS

MARIN'S MOTORCYCLE HEADQUARTERS

Authorized Dealer for:

HONDA

TRIUMPH

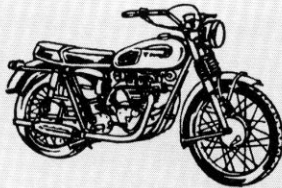
KAWASAKI

PENTON

- ✓ SALES
- ✓ SERVICE
- ✓ PARTS
- ✓ ACCESSORIES
- ✓ CLOTHING
- ✓ SAFETY & RACING EQUIPMENT

MOTORCYCLE INSURANCE
IMMEDIATE COVERAGE

FINE SELECTION OF USED MOTORCYCLES



TAILORED FINANCING
AVAILABLE



456-7431



Complete Repair
and Machine Shop

MARIN MOTORSPORTS INC.

(SAME AS HONDA OF MARIN)

Open Mon Through Sat. And Wed. Nights To 9:00

1560-4th ST. (Between E & F)

San Rafael.



I'll never get the bugs out of this one

(Photo by Dave Allen)



Deviation Dick Carter sidewise, followed very closely by Lee Thompkins, Stinger.

(Photo by W.H. Spencer)



E Production Porsche's are many.

(Photo by Stephen W. Lathrop)

HIGHEST POINT ELEVATION 175.4

ENTRANCE 1

Paddock

PIT LANE (11-54)

PITS

11

12

SPORTS CAR STARTING LINE

STRIP STARTING LINE

LOWEST ELEVATION 15.4

10

DRAG

1

2

3

4

5

6 CAROUSEL

7 "A"

8

ESSES

9

ENTRANCE 2

121

PARKING

10 JORDANA

STATE HIGHWAY

SPORTS CARS TRACK LENGTHS
 COURSE "A" 2.523 MILES ON CENTERLINE
 COURSE "B" 2.235 MILES ON CENTERLINE

SPEED CONVERSION TABLE

Lap Time (Min. Sec.)	Speed (M.P.H.)	Lap Time (Min. Sec.)	Speed (M.P.H.)	Lap Time (Min. Sec.)	Speed (M.P.H.)
1:20.0	113.56	1:44.0	87.35	2:08.0	70.97
1:21.0	112.16	1:45.0	86.52	2:09.0	70.42
1:22.0	110.79	1:46.0	85.70	2:00.0	69.88
1:23.0	109.45	1:47.0	84.90	2:11.0	69.35
1:24.0	108.15	1:48.0	84.12	2:12.0	68.82
1:25.0	106.87	1:49.0	83.34	2:13.0	68.31
1:26.0	105.63	1:50.0	82.59	2:14.0	67.80
1:27.0	104.42	1:51.0	81.84	2:15.0	67.30
1:28.0	103.23	1:52.0	81.11	2:16.0	66.80
1:29.0	102.07	1:53.0	80.39	2:17.0	66.31
1:30.0	100.94	1:54.0	79.69	2:18.0	65.83
1:31.0	99.83	1:55.0	79.00	2:19.0	65.36
1:32.0	98.75	1:56.0	78.32	2:20.0	65.89
1:33.0	97.68	1:57.0	77.65	2:21.0	64.43
1:34.0	96.64	1:58.0	76.99	2:22.0	33.98
1:35.0	95.63	1:59.0	76.34	2:23.0	63.53
1:36.0	94.63	2:00.0	75.71	2:24.0	63.09
1:37.0	93.66	2:01.0	75.08	2:25.0	62.65
1:38.0	92.70	2:02.0	74.46	2:26.0	62.22
1:39.0	91.76	2:03.0	73.86	2:27.0	61.80
1:40.0	90.85	2:04.0	73.26	2:28.0	61.38
1:41.0	89.95	2:05.0	72.68	2:29.0	60.97
1:42.0	89.06	2:06.0	72.10	2:30.0	60.56
1:43.0	88.20	2:07.0	71.53	2:31.0	60.16

X TELEPHONE O CONCESSIONS

SEARS POINT RACEWAY

FRANCISCAN

DISTINCTIVE Dining

of SONOMA

HIGHWAY 15
Sonoma

Friday and Saturday - 4 to 11 p.m.
 Sunday thru Thursday - 4 to 10 p.m.

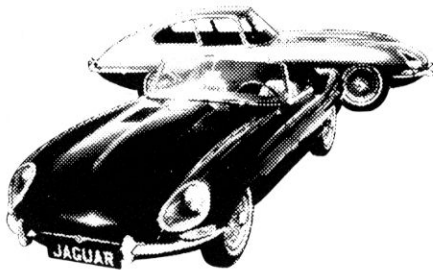
CLOSED MONDAYS and HOLIDAYS

Banquet Facilities For Reservations - 996-3000



Southern California drivers such as Carl Swanson (GT-6) & Porsche pilot Bob Kirby will try their talents on Chuck Forge No. 11 & No. 4 Gerard Raney.

(Photo by Lathrop)



E F SWEENEY BRITISH CARS

MG-JAGUAR-SPRITE-AUSTIN AMERICA

Sales Service Parts

523 FRANCISCO BLVD. . SAN RAFAEL . 454-6515

OVERSEAS DELIVERY ARRANGED

SERVING MARIN 17 YEARS

SONOMA NATIONAL GOLF CLUB

18 Hole Championship Course in the Beautiful
Valley Of The Moon

*BREAKFAST - LUNCHESES - COCKTAIL
LOUNGE - BANQUETS - SWIMMING*



Open to the Public

Cocktail Lounge

17700 ARNOLD DRIVE

Boyes Hot Springs.....(707) 996-0300

Caddy House.....(707) 996-0944



The Porsche of Walt Maas, three-wheels it through Turn 2, showing why Porsche wins races.

Visit us 9 miles north on Route 121

TOPS IN CYCLE TACHS

6,12 v, mag. 8,12,16,000 R.P.M.

FEATURES

- Internal & Ext. Cushioned
- 2% Accuracy Guaranteed
- Chrome Polish Case
- Easily Connected
- Instant Speed Readings

Chrome Polished
Handlebar Mount



Westberg SONOMA CAL.
MANUFACTURING CO 95476

COMPLETE TUNE-UP

MAKES THESE TESTS IN HALF USUAL TIME

- | | |
|---------------|----------------------|
| Engine RPM | Battery and Cables |
| Point Spacing | Generator & Alt. |
| Timing | Carburetor |
| Ignition | Lights, Horn, Diodes |
| Starter | Coil and Circuit |
| Primary | Condenser |



Thousands in daily use on all engines **ENGINEAID**
CAT. H68 — \$77.60



Westberg SONOMA CAL.
MANUFACTURING CO 95476

J&B FORD

AUTHORIZED SALES & SERVICE

CORTINA MUSTANG TRUCKS



TORINO GT SportsRoof

CORTE MADERA

5860 PARADISE BLVD.

924-5800

PARADE



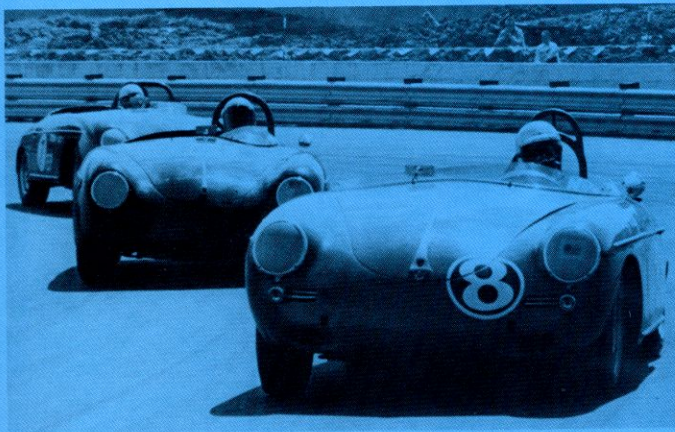
(Photo by Stephen W. Lathrop)



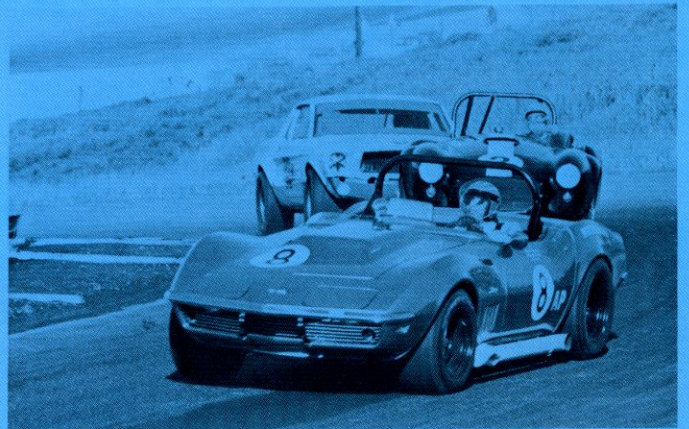
(Photo by Stephen W. Lathrop)



(Photo by Stephen W. Lathrop)

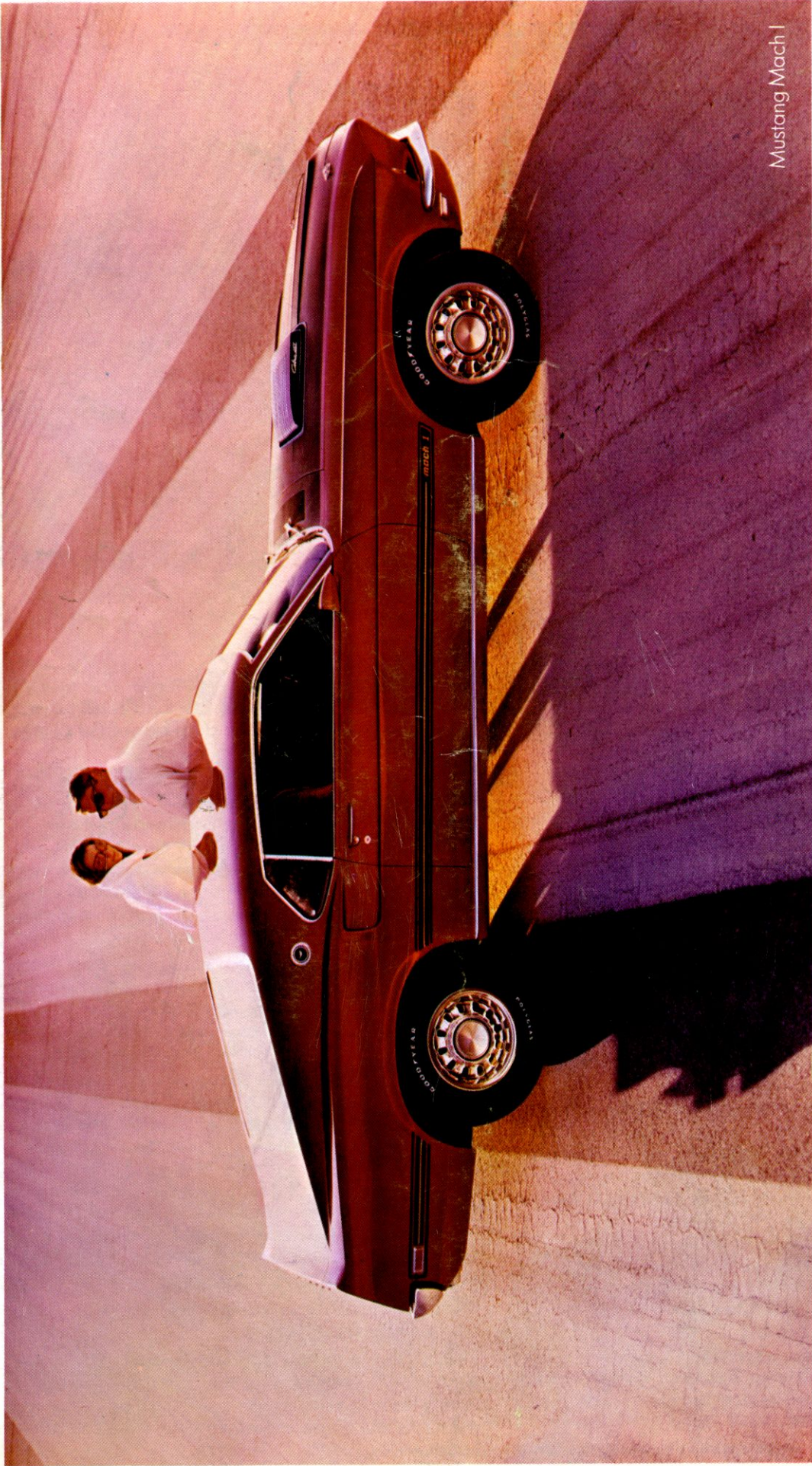


(Photo by Stephen W. Lathrop)



Herb Caplan leads Dick Terrel and ? Mustang out of turn 3 at Sears Point Sunday March 30, 1969.

(Photo by Don H. Korntved)



Mustang Mach I

New kick for Mustangers