

# MONTEREY SPORTS CARRAGE



*M. Sandleton*

	
<b>CANADIAN AMERICAN CHALLENGE CUP</b>	

LAGUNA SECA • OCTOBER 11 • 12 • 13, 1968

Z is for "Zap!"

Translation: a 302 V8 with mechanical lifters, hi-performance cam, aluminum intake manifold, Holley 4-barrel.

Plus: multi-leaf rear springs,

heavy-duty shocks, new white-lettered tires on 15 x 7 wheels.

And a Hurst shifter for the 4-speed.

While you're at it, why not add the new 'Vette type 4-wheel

disc brakes?

By now you know the mean streak isn't just painted on—it's built in.



**Putting you first, keeps us first.**

# We've got a mean streak.



## Z/28 Camaro.



# MONTEREY GRAND PRIX



FIA INTERNATIONAL LISTING NO. I 17-68  
 SPONSORED FOR CHARITY BY THE  
 SPORTS CAR RACING ASSOCIATION  
 OF THE MONTEREY PENINSULA  
 AT LAGUNA SECA RACEWAY



## SCHEDULE OF EVENTS

### FRIDAY, October 11, 1968

- 7:00- 9:00 a.m. Registration and Scrutineering at course.
- 9:30-11:15 a.m. Can-Am warmup and tuning
- 11:30-12:30 p.m. G.P. Championship practice
- 12:30- 1:00 p.m. LUNCH
- 1:00- 2:15 p.m. Regional practice
- 2:30- 3:15 p.m. G.P. Championship qualifying
- 3:30- 5:15 p.m. Can-Am qualifying
- 7:00-10:30 p.m. Registration and Scrutineering.  
British Motors of Monterey  
777 Del Monte Boulevard

### SATURDAY, October 12, 1968

- 7:00- 9:00 a.m. Registration and Scrutineering at course.
- 8:30- 9:00 a.m. Practice, Regional Race 1
- 9:00- 9:30 a.m. Practice, Regional Race 2
- 9:45-10:15 a.m. Practice, Regional Race 3
- 10:15-10:45 a.m. Practice, Regional Race 4
- 11:00-11:45 a.m. G.P. Championship qualifying
- 11:45-12:30 p.m. Can-Am qualifying
- 12:30- 1:00 p.m. LUNCH. Driver's meeting
- 1:00- 1:45 p.m. Can-Am qualifying
- 2:00- 2:30 p.m. Regional Race 1
- 2:45- 3:45 p.m. G.P. Championship Race (100 miles)
- 4:00- 4:30 p.m. Regional Race 2
- 4:45- 5:15 p.m. Regional Race 3

### SUNDAY, October 13, 1968

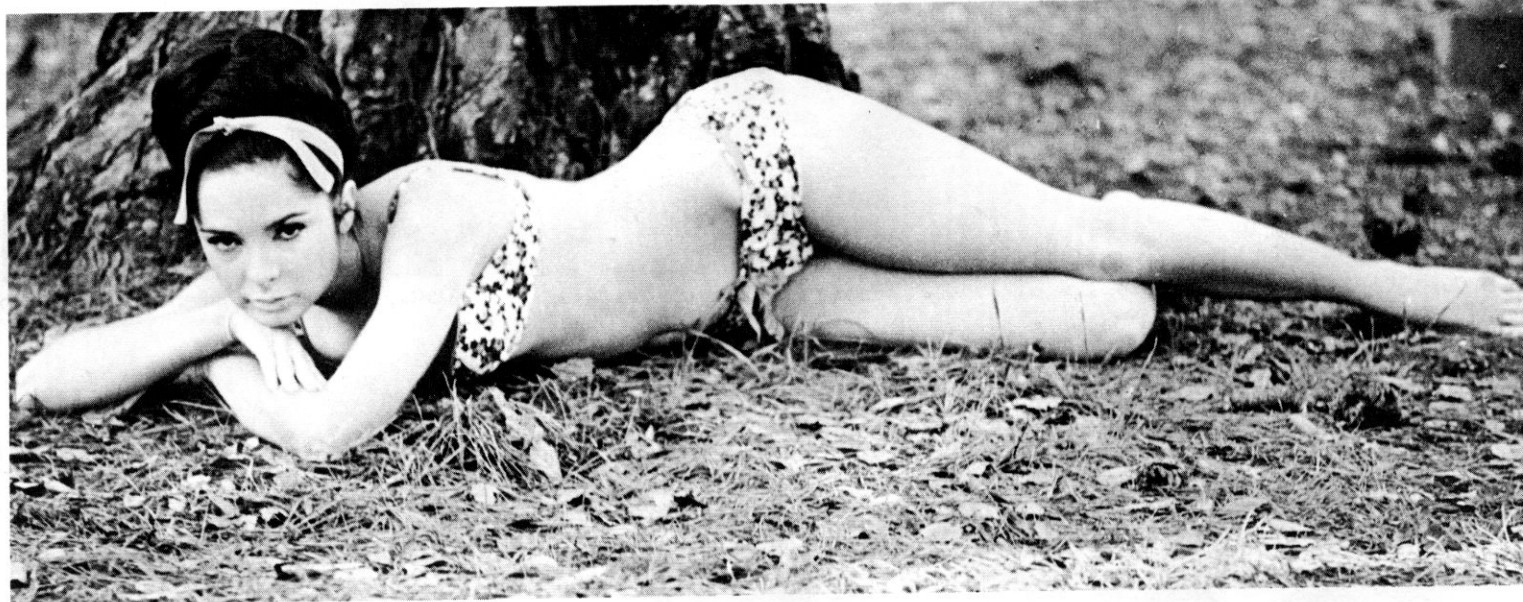
- 8:00 a.m. Meeting if necessary
- 8:30- 8:45 a.m. Warmup Race 4 A, B, C, D, production
- 9:00- 9:30 a.m. Warmup Race 5 HP, HS/R, C and D Sedan
- 9:45-10:15 a.m. Regional Race 4
- 10:30-11:00 a.m. Practice, Race 6 DP and EP
- 11:00-12:00 p.m. Can-Am warmup
- 12:00-12:30 p.m. LUNCH
- 12:30- 1:00 p.m. Regional Race 5
- 1:10- 1:40 p.m. Regional Race 6
- 1:40- 2:30 p.m. Intermission
- 2:30 p.m. Monterey Grand Prix — Can-Am., 80 laps, 152 Miles, Fastest 30 cars to start
- 4:30 p.m. (ap.) Victory Ceremony at S/F
- 7:30 p.m. Awards Banquet, Holiday Inn of America, Carmel

LITHOGRAPHED BY W. T. LEE PRINTING COMPANY  
 MONTEREY, CALIFORNIA



# Cheri Howell

MISS MONTEREY GRAND PRIX



Miss Monterey Grand Prix of 1968, Cheri Howell is a beautiful young actress who thoroughly captivates all who meet her. Our dark-eyed Queen is 5'5", with all the right statistics otherwise, as obvious in the photos by Dave Allen.

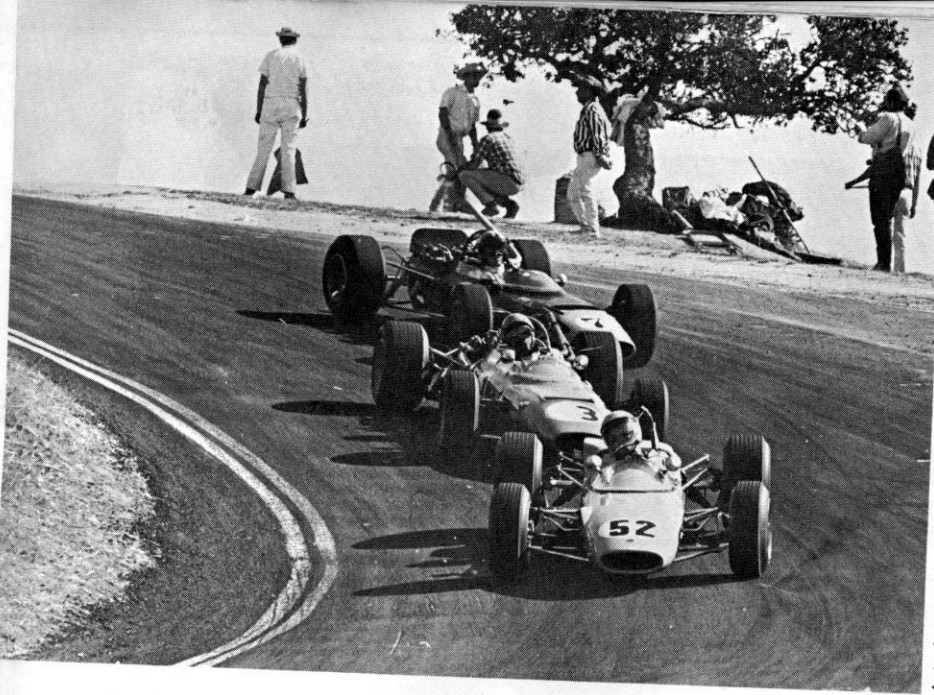
She's performed in a dozen or so plays on stage — most of them in fairly serious and demanding roles. Add on several TV shows and a couple of motion pictures and soon you are impressed with her versatility. But that's hardly the whole of it.

Cheri's an Army brat (she said it!) who speaks French, some Arabic, Japanese and Spanish. She cloaks her English in Southern, British, Cockney, Spanish or French accents as the role demands. Not that that isn't enough — she is a dancer skilled in modern, ballroom, boogie and go-go!

Her professional training was at Columbia Studio City Film Industry Workshops, ANTA Academy of Performing Arts and the UCLA Theatre Arts department.

Cheri's latest appearance on TV was on "The Dating Game," September 26.

Dave Allen Photos



Antoni Corfas Photo

# SATURDAY - RACE 1

CLASSES:

RACE WINNERS

1. \_\_\_\_\_
2. \_\_\_\_\_
3. \_\_\_\_\_
4. \_\_\_\_\_
5. \_\_\_\_\_



G. N. Pendleton Photo

# SATURDAY - RACE 2

CLASSES:

RACE WINNERS

1. \_\_\_\_\_
2. \_\_\_\_\_
3. \_\_\_\_\_
4. \_\_\_\_\_
5. \_\_\_\_\_



Peter Sands Photo

# SATURDAY - RACE 3

CLASSES:

RACE WINNERS

1. \_\_\_\_\_
2. \_\_\_\_\_
3. \_\_\_\_\_
4. \_\_\_\_\_
5. \_\_\_\_\_



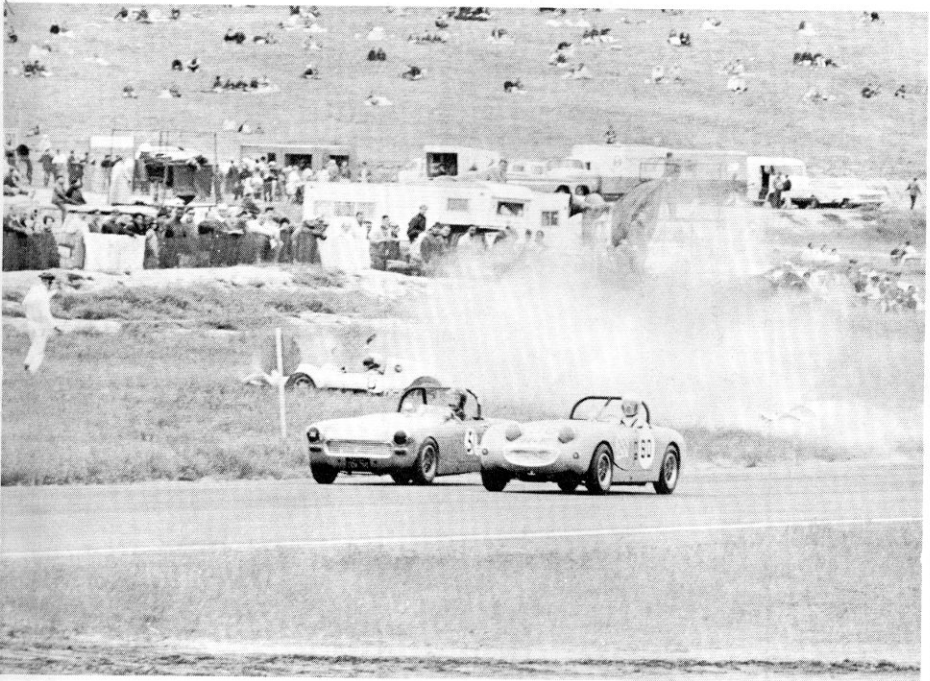
Denny Denham Photo

# SATURDAY - RACE 4

CLASSES:

RACE WINNERS

- 1. \_\_\_\_\_
- 2. \_\_\_\_\_
- 3. \_\_\_\_\_
- 4. \_\_\_\_\_
- 5. \_\_\_\_\_



Dave Allen Photo

# SUNDAY - RACE 5

CLASSES:

RACE WINNERS

- 1. \_\_\_\_\_
- 2. \_\_\_\_\_
- 3. \_\_\_\_\_
- 4. \_\_\_\_\_
- 5. \_\_\_\_\_



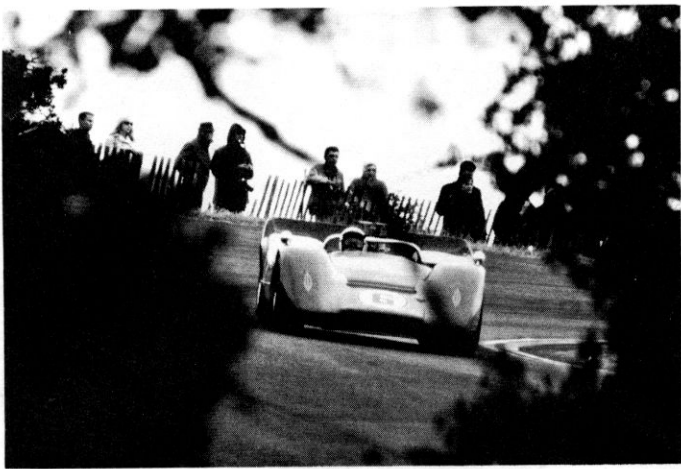
Mike Lundstrom Photo

# SUNDAY - RACE 6

CLASSES:

RACE WINNERS

- 1. \_\_\_\_\_
- 2. \_\_\_\_\_
- 3. \_\_\_\_\_
- 4. \_\_\_\_\_
- 5. \_\_\_\_\_



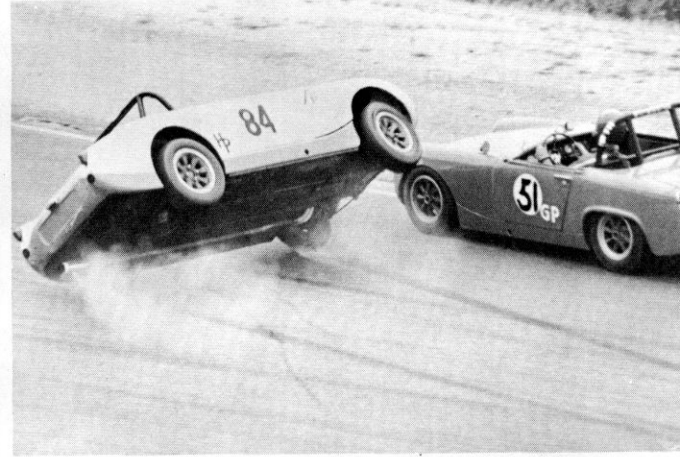
RACE BEAUTY — Jack Wheeler, Santa Clara



RACE COLOR — Kenneth P. Yules, San Jose



RACE HUMOR — J. C. Goodwin, Pebble Beach



RACE ACTION — Douglas W. Croucher, Sacramento

# WINNING PHOTOS OF 1968 USRRC

Dozens of exciting photographs were entered in the 1968 USRRC Laguna Seca Photo Contest, judges were hard pressed to make their decisions.

The color winner simply cannot be shown to good advantage in black and white. Its brilliant blur of color tells a story of blinding speed and action.

The humor is a subtle story. And as in most comedy, is one of disappointment as well. Did the driver of this car have a premonition when he chose his sponsor? Who knows.

And the Action shot: perfect timing of a flip which ended with the driver suffering more from disappointment than from injury. With a noticeable lack of Prettygirlphotos, our judges turned to other kinds of race beauty. Not only was this photograph beautifully composed, but it told the story of Mark Donohue's graceful technique, immaculate racecar and his perpetual "Captain Nice" appearance and personality.

Our hats are off (and pass prizes delivered) to these photo winners:

## LAGUNA SECA CAN-AM 1968 PHOTO CONTEST

Four categories again comprise the 1968 contest. All photos must be of action, people or cars at the 1968 Laguna Seca Can-Am races. RACE ACTION — RACE HUMOR — RACE BEAUTY (S) — COLOR PHOTO, are the categories. Each winner receives a pair of pit passes for the Laguna Seca. The rules are simple:

1. You must be an amateur photographer (one who takes pictures for fun, and not as a business or part time business).
2. Entries must be 8x10 inch glossy prints for black and white. Color can be 5x7 or 8x10 inch prints. All entries must have photographer's name and city on back of each print.
3. Mail as many entries as you wish to: SCRAMP, Box 2078, Monterey, California 93940. The deadline is November 15, 1968.
4. All entries will be retained by SCRAMP for possible future use. Photo credits will be given for those used.
5. Winners will be announced about December 1, 1968 and prizes will mailed to winners about April 15, 1969.



Dave Allen Photo



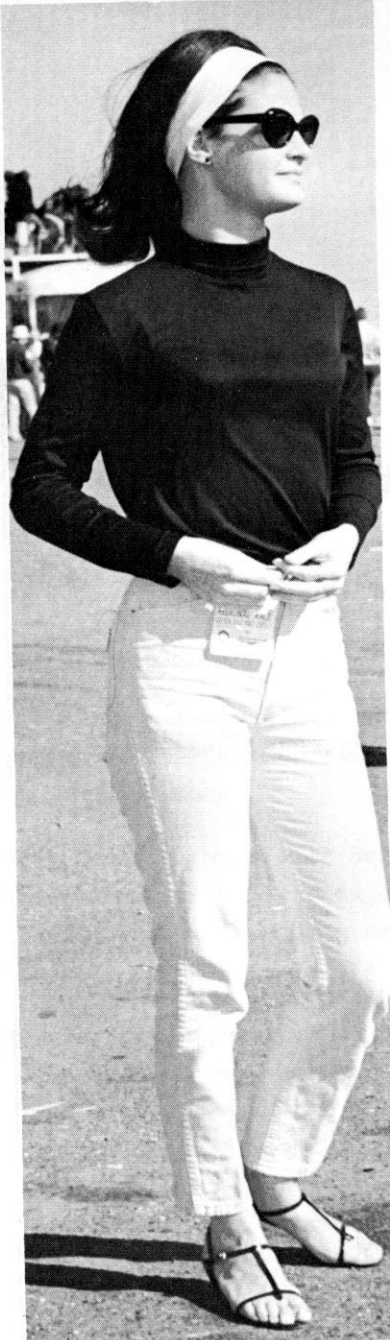
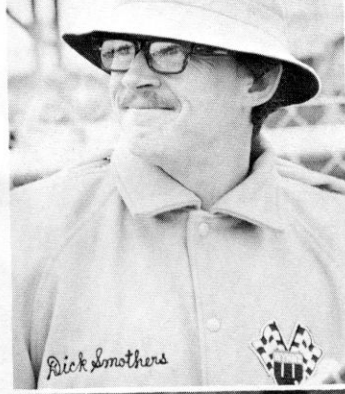
Antoni Cortes Photo



Dave Allen Photos



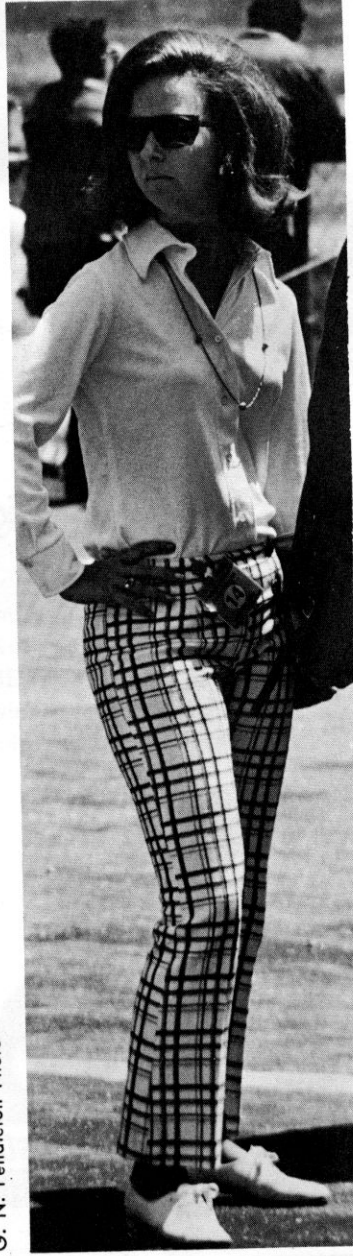
Ronald C. Miller Photo



G. N. Pendleton Photo



G. N. Pendleton Photo



J. C. Goodwin, Jr. Photo







## PEBBLE BEACH

- A. 1951. MGTC at speed on straightaway.
- B. 1950. Sterling Edwards going into first turn.
- C. John Von Neuman, Porsche Spyder, and Pete Lovely, VW Special.
- D. 1951. Jim Kimberly and possibly first Ferrari at Pebble Beach.
- E. 1951. Roger Barlowe, 1500cc class winner in his special.

# REMEMBER?



B. — Kevin Walsh Photo



C. — Edwin Ingalls Photo

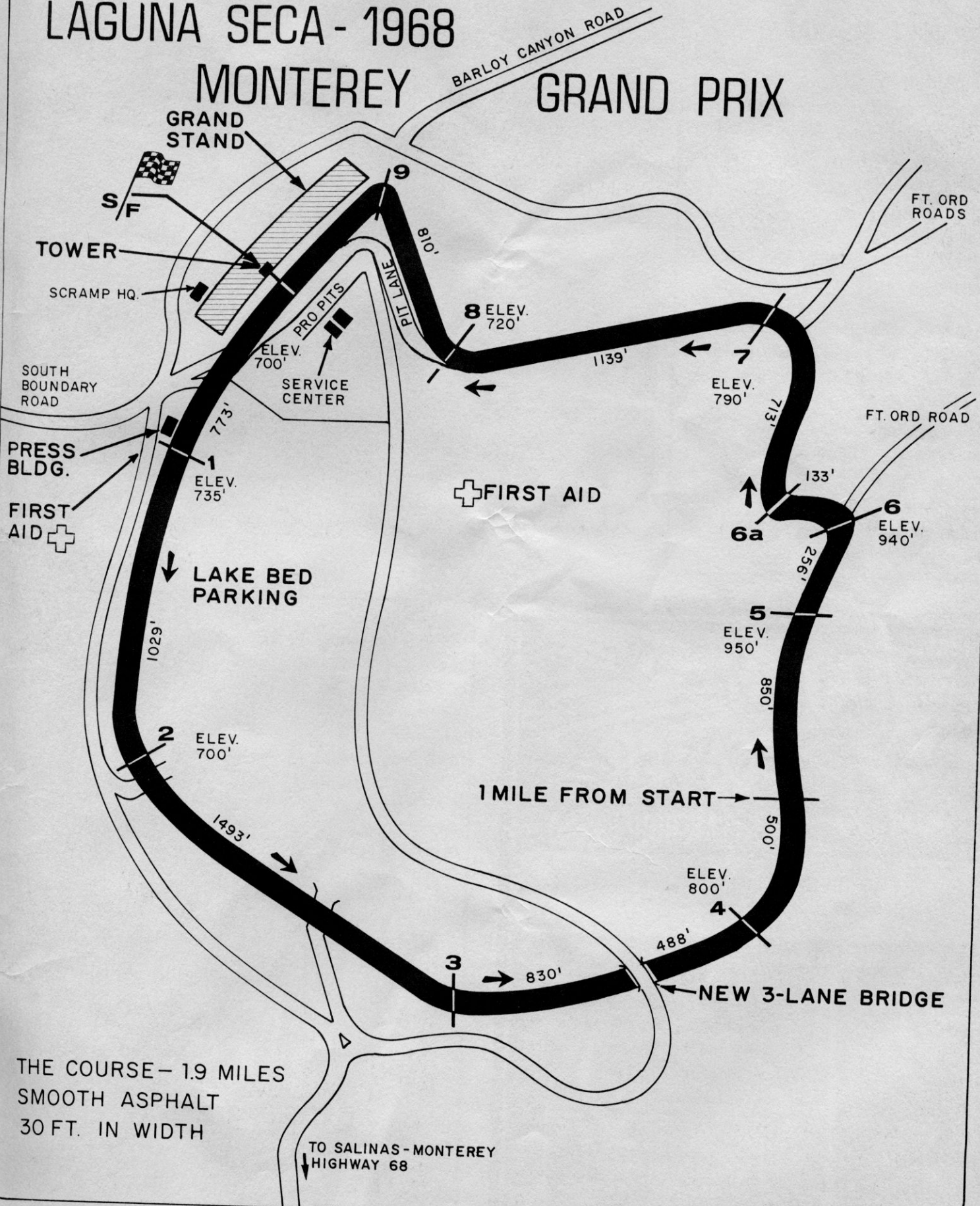


D. — Edwin Ingalls Photos — E.

# LAGUNA SECA - 1968

## MONTEREY

## GRAND PRIX

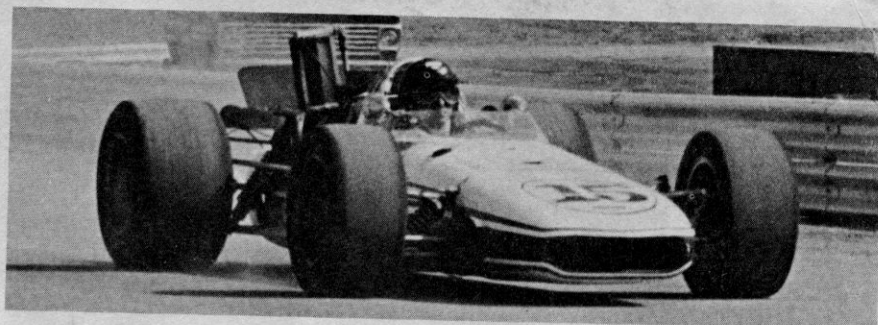


THE COURSE - 1.9 MILES  
SMOOTH ASPHALT  
30 FT. IN WIDTH

# 1968 Entries

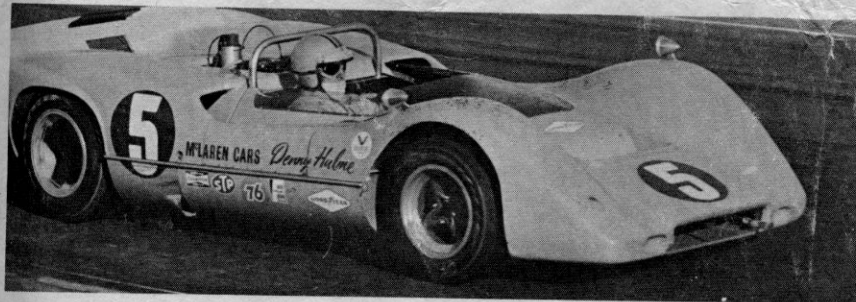
## KEN MILES MEMORIAL

### GP CHAMPIONSHIP



Dr. Lou Sell, Championship Points Leader

NO.	CLASS	DRIVER	CAR	ENTRANT
1	A	Brian O'Neil, Fla.	Lola T-140 Chev. 304 cid	American Racing Motors, Miami, Fla.
2	A	Jerry Entin, Calif.	Le Grand Mk 7A Chev. 304 cid	Le Grand Race Cars, Sylmar, Calif.
3	A	Bob Brown, N.Y.	Lola T-140 Chev. 305 cid	Bob Brown, Huntington L.I., New York
4	B	Domenick Dioguardi, Calif.	Lotus 27, 1600 cc	J. F. Scavone Cox, Glendale, Calif.
5	A	Stew McMillen, Ill.	Eisert Chevy 5000 cc	Stew McMillen, Libertyville, Illinois
6	B	Michael G. Brodie, Calif.	Lotus Cosworth 1600 cc	Levi's, San Rafael, California
7	B	Wes McNay, Calif.	Le Grand Mk 3B Ford 1600 cc	M & R Enterprises, San Carlos, Calif.
8	C	Skeeter McKitterick, Calif.	Lotus 22 Cosworth Ford 1100 cc	Automotion, Inc., San Diego, California
9	B	Dick Smothers, Calif.	Chevron Cosworth Ford 1600 cc	Smothers Bros. Racing, Fullerton, Calif.
11	A	Brett Lunger, Mass.	Caldwell D-8 Chev. 302 cid	Autodynamics Corp., Marblehead, Mass.
12	A	George Wintersteen, Pa.	Eagle 50/F-A Traco-Chev. 5000 cc	Wintersteen Racing, Newtown Square, Pa.
14	A	Bud Morley, Colo.	McLaren Mark II Chev. 302 cid	Morley Racing, Denver, Colo.
15	A	Dr. Lou Sell, Calif.	Eagle Chev. 305 cid	Smothers Bros. Racing, Fullerton, Calif.
16	B	Woody Harris, Calif.	Kellison Mk II Ford 1600 cc	Grand Prix Racing, Lincoln, Calif.
17	B	Malcolm Starr, N.Y.	Brabham BT21/C Ford 1588 cc	Anthony Koshland Racing, New York, N.Y.
21	B	Bill James, Calif.	Lotus Mk 51 Ford 1600 cc	Bill James, Modesto, California
22	B	Gregory Hodges, Calif.	Cooper T-76 Ford 1600 cc	W. Todd Hodges, Chico, California
24	A	Rex Ramsey, Calif.	Shadow Chev. 305 cid	Competition American, Sherman Oaks, Calif.
26	B	Stephen Griswold, Calif.	Brabham Ford 1600 cc	Racesales, Berkeley, California
27	A	Walt Mathewson, Calif.	Cooper F2 Ferrari 2500 cc	Walt Mathewson, Campbell, California
31	B	Steve Pfeifer, Calif.	Brabham BT21 Ford 1600 cc	Lucky Lager Beer, San Francisco, Calif.
32	B	Charles Dietrich, Mo.	Lotus 41 BRM 1600 cc	Hogan Motor Leasing, St. Louis, Mo.
33	A	Pierre Phillips, Ore.	Lola T-140 Chev. 302 cid	Pierre's Motors Racing, Portland, Oregon
41	B	Gerhard Klose, Calif.	Le Grand Mk 3D Ford 1600 cc	Frank Monise Motors, Pasadena, Calif.
43	C	Frank Bramante, Calif.	Lotus Ford 1000 cc	Bramante Racing Developments, San Pablo, Cal.
44	B	Max Callicott, Calif.	Lotus 22 Ford 1600 cc	Bob Snow's Garage, Anaheim, Calif.
46	A	Lyle Forsgren, Wash.	Forsgrini M10D Chev. 5000 cc	Forsgren Tngr. Ltd., Seattle, Wash.
47	A	Charles Morrison, Calif.	Pegasus F.W.D. Corvair 145 cid	Charles A. Morrison, Modesto, Calif.
50	B	Dr. William Monson, Wash.	Brabham BT-21-A Ford 1600 cc	Dr. William T. Monson, Kent, Wash.
51	B	George F. D. Pridmore, Cal.	Cooper Winkspeed Ford 1598 cc	George F. D. Pridmore II, Tiburon, Calif.
52	B	Dan Davis, Calif.	Lotus 41C Ford 1598 cc	Racesales, Berkeley, California
56	B	Ted Clark, Ill.	Brabham Ford 1600 cc	Team Nappi, Rockford, Ill.
57	A	Kurt Reinold, Ill.	McKee Chev. 302 cid	Team Nappi, Rockford, Ill.
60	B	Tom Tufts, Wisc.	Chevron HRE Ford 1598 cc	Stan Roadge, Milwaukee, Wis.
64	B	Charlie Adams, Calif.	Brabham BT 21 C Ford 1600 cc	C. W. Adams Racing, Manhattan Beach, Calif.
65	A	Nick Dioguardi, Calif.	W.R.E. Shadow Ford 289 cid	Rapid Color, Glendale, Calif.
71	B	Bob Wenz, Calif.	Cooper T 76 Ford 1599 cc	Foreign Auto Parts, San Jose, Calif.
72	B	Ray France, Calif.	Brabham BT 21 Ford 1600 cc	Centaur Racing Asso., Redondo Beach, Calif.
73	B	Gary Johnson, Calif.	Lotus 51 Ford 1600 cc	Gary Johnson, San Jose, Calif.
74	B	Mike Eyerly, Ore.	Brabham BT-18 Ford 1598 cc	Eyerly Volkswagen, Salem, Oregon
75	B	Henry H. Hester, Calif.	McLaren Mk IV B Ford 1600 cc	Henry H. Hester, La Jolla, Calif.
76	C	Tom Kornell, Calif.	Lotus Mk 31 Holbay Ford 1050 cc	Kornell Racing, Seal Beach, Calif.
77	A	Dr. Don Richardson, La.	Le Grand Mk 7A/F.A. Chevy 5000 cc	Dr. Donald Richardson, New Orleans, La.
85	B	Bill Brack, Canada	Lotus 41C Ford 1594 cc	Sports Cars Unlimited, Clarkson, Ontario, Canada
91	B	Jon Milledge, Cal.	Brabham BT 21 Ford 1594 cc	Jon Milledge, Mountain View, Calif.
94	A	Mike Hiss, N.J.	N.-Resist Alloy T140 Traco 304 cid	Abrasive Alloy Racing Team, Riverside, N.J.
99	A	Ronald Grable, Calif.	PML/Spectre HR-1 Chev. 5000 cc	PMC/Spectre Racing, Belmont, Calif.



Denis Hulme, Can-Am Points Leader

# 1968 Entries

## MONTEREY GRAND PRIX CANADIAN-AMERICAN CHALLENGE CUP SERIES

No. Color	Driver	Car	Entrant
0 Poppy	DON JENSEN, Wash.	Burnett Mk II Chev. 365 cid	Don Jensen, Seattle, Wash.
1 Red/White	SAM POSEY, Conn.	Caldwell D-7C Chev. 365 cid	Autodynamics Corp., Marblehead, Mass.
2 Red/White	BRETT LUNGER, Va.	Lola T160 Chev. 427 cid	Autodynamics Corp., Marblehead, Mass.
3 Red	CHRIS AMON, Italy	Ferrari V12 6200 cc	Modern Classic Motors, Reno, Nev.
4 Orange	BRUCE McLAREN, New Z	McLaren Mk 8A Chev. 427 cid	McLaren Cars, Ltd., Colnbrook, England
5 Orange	DENIS HULME, New Z	McLaren Mk 8A Chev. 427 cid	McLaren Cars, Ltd., Colnbrook, England
6 Blue	MARK DONOHUE, Pa.	Sunoco Special Chev. 427 cid	Roger Penske Racing, Philadelphia, Pa.
8 Yellow/Black	BILL EVE, Calif.	Matich SR 3 Repco Brabham V-8 4400 cc	Kent Price, Menlo Park, Calif.
10 Orange/Blue	CHUCK PARSONS, Calif.	Lola Simoniz Special T160 Bartz Chev. 427 cid	Carl A. Haas Racing, Highland Park, Ill.
11 Red	Lothar Motschenbacher, Cal.	McLaren Mk 6B Ford 6200 cc	Leader Card Racers, Milwaukee, Wisc.
12 Blue	JERRY ENTIN, Calif.	Lola Mk III Chev. 6500 cc	Eric Hauser, Beverly Hills, Calif.
15 Blue	BRIAN O'NEIL, Fla.	A. R. M. Lola Mk 3B Chev 357 cid	American Racing Motors, Miami, Fla.
17 Blue	JERRY TITUS, Calif.	McLaren M6B Chev. 365 cid	H'wood Sports Cars/TG Racing, Tarzana, Cal.
19 Red	GARY WILSON, Kans.	McLaren Mk 2-B Chev. 377 cid	Gary Wilson, Towanda, Kansas
21 Orange	JIM PAUL, Calif.	McLaren Mk III B Chev. 377 cid	Jim Paul, Gardena, Calif.
25 Blue/White	CHARLES HAYES, Calif.	Cro-Sal Olds. 389 cid	Ralph Salyer, Hammond, Ind.
26 Orange/Blue	SKIP SCOTT, Penn.	Lola Simoniz Sp. 2160 Bartz Chev. 365 cid	Carl A. Haas Racing, Highland Park, Ill.
28 Blue	ANSON JOHNSON, Fla.	A.R.M. Lolo Mk 3B Bartz Chev. 359 cid	American Racing Motors, Miami, Fla.
31 White/Blue	MERLE BRENNAN, Nev.	Genie Chev. 5400 cc	Merle Brenna Automotive, Reno, Nev.
36 Blue	SWEDE SAVAGE, Cal.	Lola T-160/4 Ford 305 cid	All American Racers, Santa Ana, Calif.
41 White/Black	RON LA PEER, Calif.	Genie Mk 10 Chev. 302 cid	Bill Campbell-Dan Blocker, Burbank, Calif.
43 Bronze	RICH GALLOWAY, Colo.	Lola Mk III Traco Chev. 365 cid	R. B. Galloway, Denver, Colo.
45 White/Blue	ROBERT EDMISON, Calif.	King Cobra T-2 Chev. 402 cid	Airline Auto Sales, Ontario Calif.
48 Blue	DAN GURNEY, Calif.	McLaren M6B Ford 325 cid	All American Racers, Santa Ana, Calif.
49 Silver	MILES GUPTON, Calif.	Platypus Olds. 259 cid	Miles Gupton, Compton, Calif.
52 Blue	PETER REVSON, N.Y.	McLaren M6B Ford 427 cid	Shelby Racing Company, Inc., Torrance, Calif.
57 Blue	MONTE SHELTON, Ore.	Porsche 906 Carrera 2512 cc	Monte's Motors, Portland, Ore.
62 Red	JOHN CANNON, Calif.	McLaren Traco Chev. 365 cid	Continental Accessories, Santa Monica, Calif.
64 Orange	STAN BURNETT, Wash.	Burnett Mk III Chev. 427 cid	Williams & Swanson Racing Renton, Wash.
66 White	JIM HALL, Texas	Chaparral 2G Chev. 427 cid	Chaparral Cars, Midland, Texas
76 Black/Red	TONY SETTEMBER, Calif.	Lola T-70 Mk II Chev. 365 cid	Webster Racing, Mill Valley, Calif.
77 Yellow	JACK MILLIKAN, Calif.	Lola T-70 Mk II Chev. 365 cid	Automotion of San Diego, San Diego Calif.
88 Red	GEORGE EATON, Canada	McLaren Mk III Ford 351 cid	George Eaton Racing, Scarboro Ont., Canada
99 Yellow	BILL YOUNG, Calif.	Lola T70-3B Chev. 358 cid	Mac's Super Gloss, Montrose, Calif.



The Corvette Sting Ray Pace Car  
and Other Official Cars Courtesy  
**ERNIE SINGLETON'S ROLLER CHEVROLET**



# REGIONAL ENTRIES

## RACE 1

### E PRODUCTION

1	Red	Porsche
2	Gray	Morgan
3	Floral	Porsche
5	Champagne	Porsche
6	Green	Porsche
7	Red	Porsche
9	Turquoise	Porsche
12	Blue/White	TR 3
13	Blue	TR 3
14	Blue	Porsche
15	Orange/Blue	Porsche
16	Blue	MG
17	Blue	TR 3
18	Yellow/Blk.	TR 3
19	Blue	MG
21	Orange	Porsche
22	Silver	Porsche
25	Black	Porsche
26	Yellow	Porsche
32	Red	MG
34	White	Morgan
41	Red	TR 3
42	Blue	Porsche
43		MG
45	White/Blue	TR 3
47	Red	Porsche
49	Green	Porsche
51	Silver	Porsche
55	Silver	Morgan
57	Black	Porsche
71	Yellow	Porsche
76	Green	MG
77	Yellow	Porsche
96	Red	Porsche

## RACE 2

### FORMULA VEE

2	White/Blue	Crusader
3	Red/Wh/Blue	Zink
8	Green	Crusader
11	Bronze	Crusader
14	Orange	Banshee
15	Red	Stuco Spec.
16	Blue	Autodynamics
17	White	Form Car
21	Silver/Blue	Crusader
22	Red	Autodynamics
24	Silver/Red	Kellison
30	Green	DaMic
31	Red	Band B Spec.
41	Green	Crusader
43	White	Autodynamics
44	Yellow	Vanguard
48	Red	Zink
51	White	Autodynamics
52	Green	Bobby
53	Pink	Crusader
63	Blue	Crusader
65	Orange	Burrito
66	BRG/Gold	B/K Spec.
68	Orange/White	Zink
81	Red/Yellow	Zink
83	Yellow/Red	Crusader
86	Red/Yellow	Lynx
88	Green	Autodynamics
91	Green	Autodynamics
99	Orange	Crusader

## RACE 3

### A SEDAN

1	Red/White	Mustang	Mary E. Wilkins
10	Blue/White	Barracuda	Howard Lomazoff
11	Red	Camaro	Paul Reinhart
16	Dk. Green	Camero	Frank Search
22	Blue/White	Mustang	Wm. G. Maier
28	White	Camero	John Treder

### B SEDAN

35	Orange	Opel	Richard Churchill
67	Blue	Porsche	Don Zacharie
71	White	Isuzu	Emmett C. Wilder
82	Silver	BMW Tisa	Heinz R. Eckhardt

### C PRODUCTION

25	Blue	TR 250	Ray Martinelli
69	Red/White	Porsche	Dick Smith
72	Green	Sunbeam	Chris N. Bender

### D PRODUCTION

17	Blue	TR 4	John Hart
26	White	TR 4	Jeff Kline
28	Red	TR 4	Ron Harris
29	Orange	Lotus	Wm. A. Blake
44	White	Lotus	Harlan I. Halsey
64	Red	Jaguar XK120S	Hap L.D. Richardson
68	Red	Daimler	Roy Parker
77	White	Lotus	Richard Satariano
86	Red	TR 4-A	Tim Repass
89	Gold/Black	TR 4	Robert McGrew
91	Yellow	TR 4	Ernie Haze Jr.
95	Polo Red	Lotus	Manuel D. Inacio Jr
96	Blue	Lotus	Austin Walther
98	A/H Sprite	A/H Sprite	Kenneth Fennell
99	Red	Lotus	Ed Leslie
			Richard Da Pont

# SPORTS CAR CLUB OF AMERICA

## RACE 4

### H PRODUCTION

2	Green	A/H Sprite
3	Yucca	A/H Sprite
8	Yellow	A/H Sprite
15	Orange	A/H Sprite
17	Black/Red	A/H Sprite
23	Silver	A/H Sprite
28	Green	Honda
49	White	A/H Sprite
77	Yellow	A/H Sprite
78	White	A/H Sprite
80	Turquoise	A/H Sprite
81	Green	A/H Sprite
82	Blue	A/H Sprite
83	Burgundy	A/H Sprite
84	Orange/White	A/H Sprite
88	Yellow	A/H Sprite
91	Blue	A/H Sprite
93	Red	A/H Sprite
94	Black	A/H Sprite
96	Yellow	A/H Sprite
98	Blue/White	A/H Sprite

### D SPORTS RACING

4	White	LeGrand
7	Lime	Dolphin
11	Blue	Elva SAAB
16	Yellow	Crosley
18	Red	Mini/Coop
22	Green	Lotus
47	Yellow	Wasp
55	Blue	Fiat Joe Sp.

### D SEDAN

9	Blue/White	Sunbeam Imp
14	Blue	Sunbeam Imp
13	Blue/White	Mini/Cooper S
24	Red/White	SAAB
42	Blue	Mini/Cooper S

Dick Duncan
Robert Finn
Ian P. McFall
Jerry Meinecke
J.P. Greenwalt
Ron Heim
Douglas Thompson
R.W. Colburn
Arnold S. Eilers
Norman J. Hart
Al Larrus
Edward Gaines
Bob Boyd
John V. Capraro
Wm. Castagnaro
Donald Lim
Geo. F. Granter
Marcus H. Nilson
Mike Ostrov
Roger Eandi
Jerry R. Kerns

Al Auger
John R. Stapleton
Duane H. Berndt
Stan Laskin
Larry R. Miller

## RACE 6

### F PRODUCTION

1	Yellow/White	Lotus 7
2	Red	Alfa Romeo
3	Blue	Lotus
4	Orange/White	Lotus
5	BAG	Sprite
6		Lotus
21	Orange	Alfa
23	White/Red	Lotus
25	White	MG
31	Blue	Lotus
32	Blue/White	Lotus
36	Black	Sprite
39	Lime	Alfa Romeo
41	Blue	Alfa Romeo
43	White	Austin Healey
44	Blue	Alfa Romeo
47	Blue	MG
59	Yellow	Datsun
66	Red	Sunbeam

## RACE 6

### G PRODUCTION

49	Black	Triumph
53	Yellow	TR Spitfire
54	Maroon/Gold	TR Spitfire
61	White	TR Spitfire
66	Blue	A/H Sprite MKII
68	Blue	A/H Sprite MKIII
73	Blue/White	Spitfire
74	Red	Triumph
78	BRG	MG

## RACE 6

### C SEDAN

14	Dk Blue	Morris
26	Orange	Mini/Cooper S
33	Green/White	Mini/Cooper S
56	Red/Gold	Mini/Cooper S
75	Green/White	Mini/Cooper S
89	Green	Mini/Cooper S

Alan Copeland
Paul Ochsner
John Howard
Charles Billington
George Klawitter Jr.
Joe D. Hadden
Paul R. Carrick
Anthony C. Chase
Paula A. Goble
Hanley F. Harris
Don Gilmour
Bruce Brown
Jon Norman
Bob Lusk
Don Napolitano
Jeremiah Brown
Bruce M. Stevens
Gene Osborne
Tom Elliott

Bill Stephens
Marshall D. Meyer
Derrick M. Quon
Tom C. McCarthy
Bill Haener
P.T. LeMunyon Jr.
Jerry Mortensen
Bud Harrington
Gary Parker

Leland Sheldon
Judy Kondratieff
Gordon Strom
Ken Schley
Dave McCartney
John O'Malley

## RACE 5

### A PRODUCTION

2	Black	Cobra	James G. Wilson
11	White	Corvette	Bill Treytl
81	Blue	Stingray 6M	Cliff Mathis
			Bob Allen
			John S. Tuttle
			Rich Sioma
			Bob Dye
			Lee F. Tompkins

### B PRODUCTION

3	White/Blue	Corvette	James G. Wilson
5	Green	Stingray	Bill Treytl
6	Red/Silver	Cobra 289	Cliff Mathis
9	White	Cobra	Bob Allen
16	White	Stingray	John S. Tuttle
27	Blue	Stingray	Rich Sioma
43	Red	Corvette	Bob Dye
45	White	Stingray	Lee F. Tompkins

### A SPORTS RACING

1	Red	Ferrari	David Love
17	Gray/Orange	Chewyak 1B	Dave Selway
18	Red	Cobra 289	Gary W. Burke
22	Red	Moscrati	Geo. R. West

### B SPORTS RACING

7	Silver	Porsche	Bob Jones
8	White/Red	LeGrand MKIV	Ken Hazlett
26	Red/White	Belchfire	Chas. M. Fyfe
33	Silver	Elva/Porsche	Cliff Menke
39	Persimmon	Elva MK7	Peter F. Young
46	White/Blue	Fiberlite	Dan Gardner
77	Plum/White	Porsche	John Grove
85	Green	Lotus	Wm. A. Blake

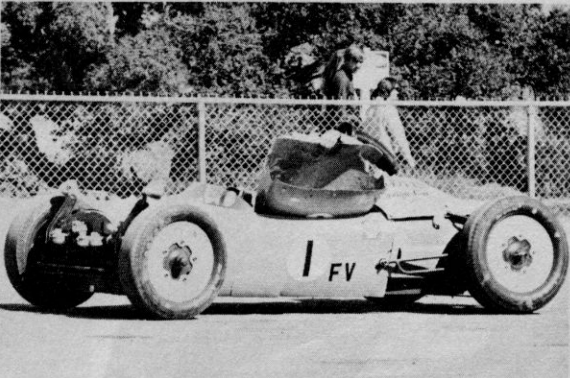
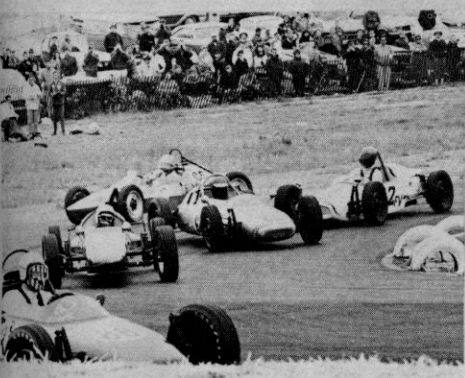
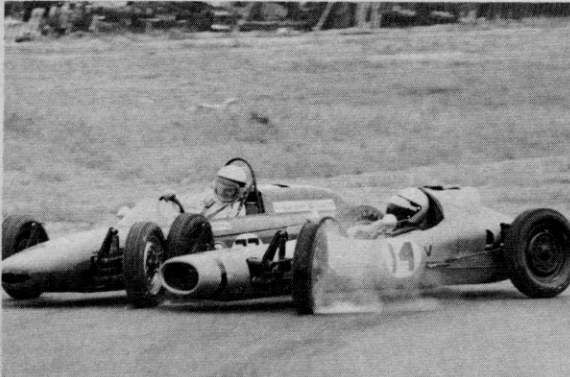
### C SPORTS RACING

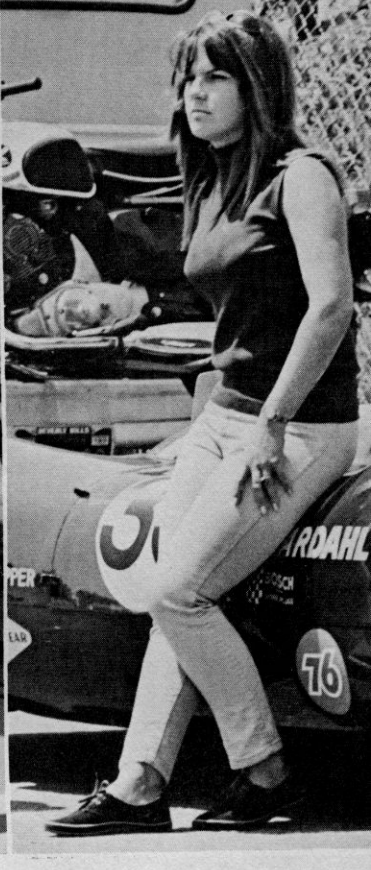
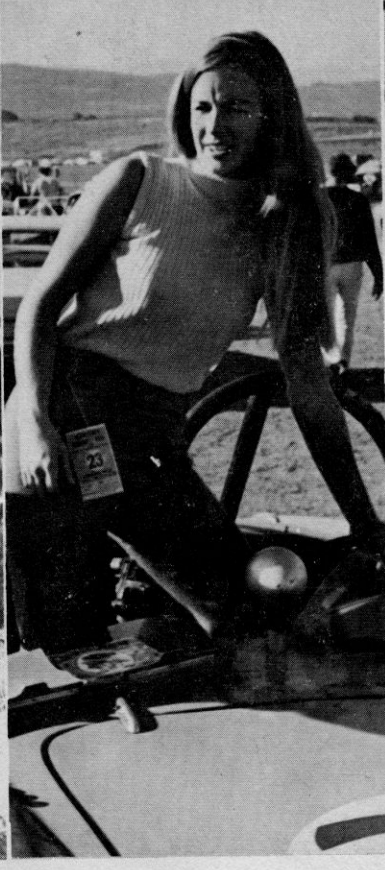
19	Silver/Blue	Lola	Jack Cavanaugh
31	Yellow	Merlyn	Geo. W. June
68	Blue	Elva MKVII	Butch Owsley
69	Yellow/Blk	Silva Genie	Ray Silva
71	Blue	Lotus XI	Larry M. Dory
72	Blue	Elva MKIV	Jerry Faught
75	Green	Lotus 23	Bill Overhauser



# WHOOOPS!

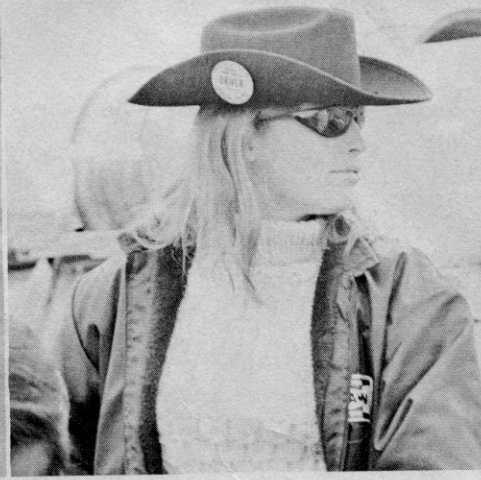
PHOTOS: Above, Anton; Cortes. Below, (l-r); Top row, Dave Allen, Rich Hughett, Bob Crispin. Bottom row, H. B. Luginbuhl, Dave Allen, Peter B. Sands.





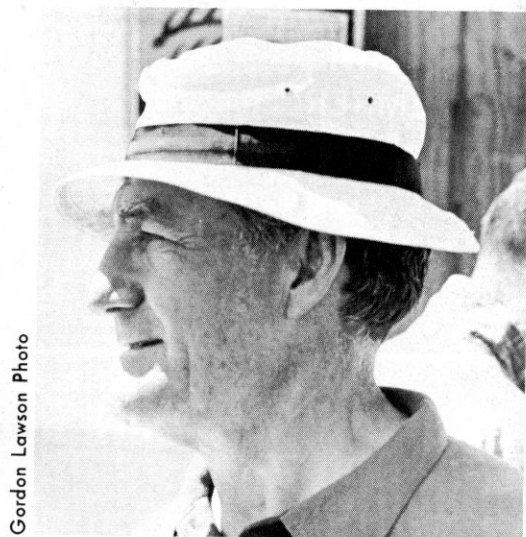
PHOTOS: 1. to r., Above; J. C. Goodwin, Jr., Bob Schild Knecht, A. Klawans, Dave Allen. Below; Dave Allen, Antoni Cortes, Dave Allen, John Bruno, Dave Allen, Peter C. Borsari.

# For The Boys..





All smiles, they're the guys to beat in the Monterey Grand Prix. Left to right: Denny Hulme, former world champion and winner of the Road America Can-Am opener; Mark Donohue, current USRRC and Trans-Am champ and winner of the Bridgehampton Can-Am; and Bruce McLaren, winner of the 1967 Monterey Grand Prix and Can-Am defending champion.



Gordon Lawson Photo

Briggs Cunningham, prominent in racing circles as car builder, entrant and storehouse of automotive knowledge.

Below: Dan Blocker of TV fame, car sponsor.

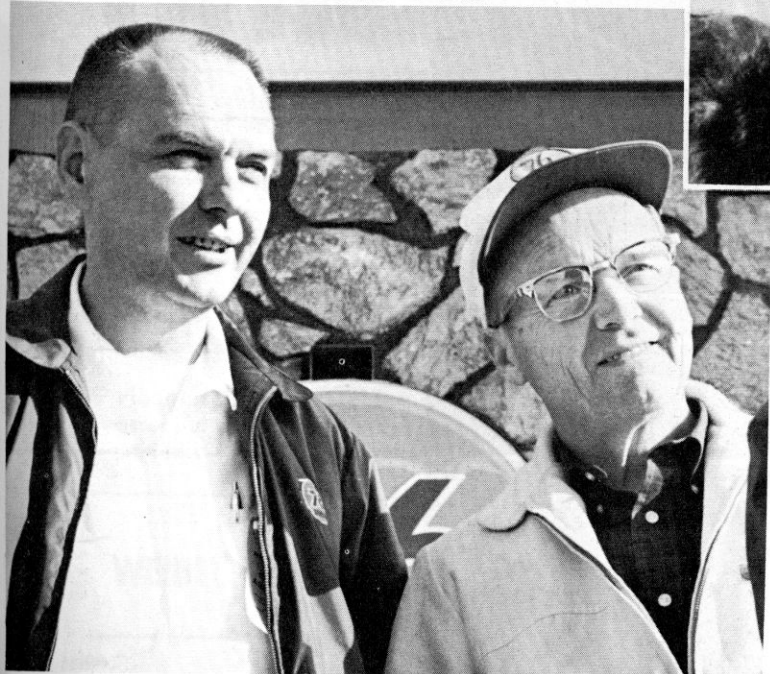


G. N. Pendleton Photo

Mollie Miles presents Ken Miles Memorial Trophy to Scooter Patrick, winner of the under-two-liter race last year. The trophy is at stake in the GP championship race Saturday.

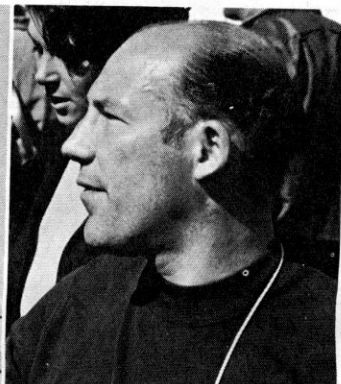
Nick Reynolds, GP driver and TV star

Stirling Moss, J-Wax racing chief



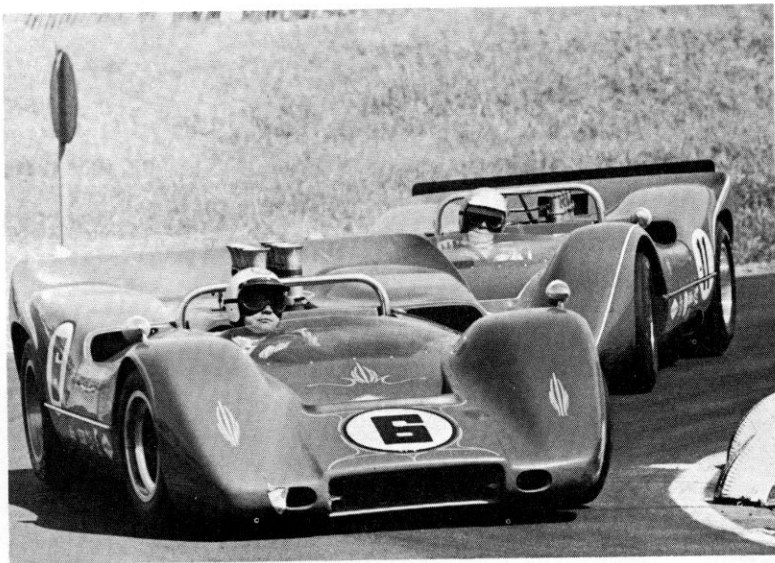
Bud Smith, manager of automotive events, and Howard Emerson, research engineer, Union 76's men of action at the races. Royal 76 is the official fuel.

G. N. Pendleton Photo



Doug Miner Photo



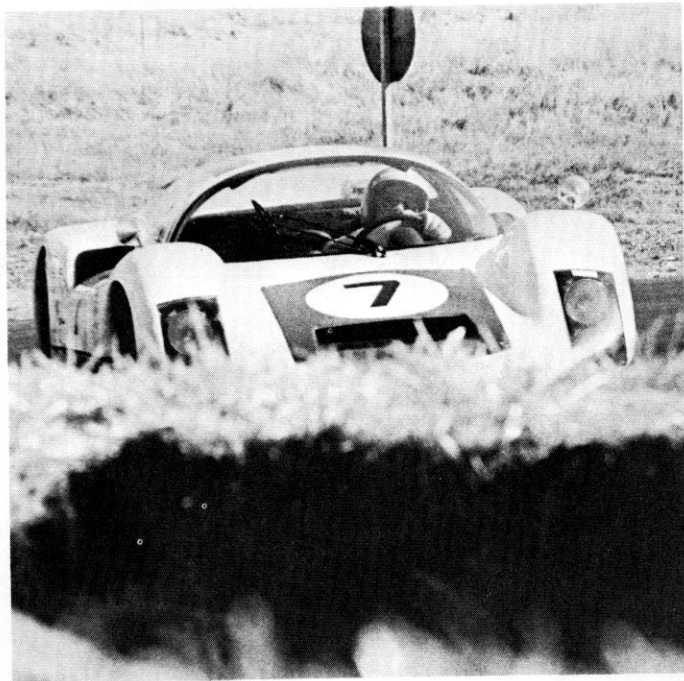


# HEADS . . .

Dave Allen Photo



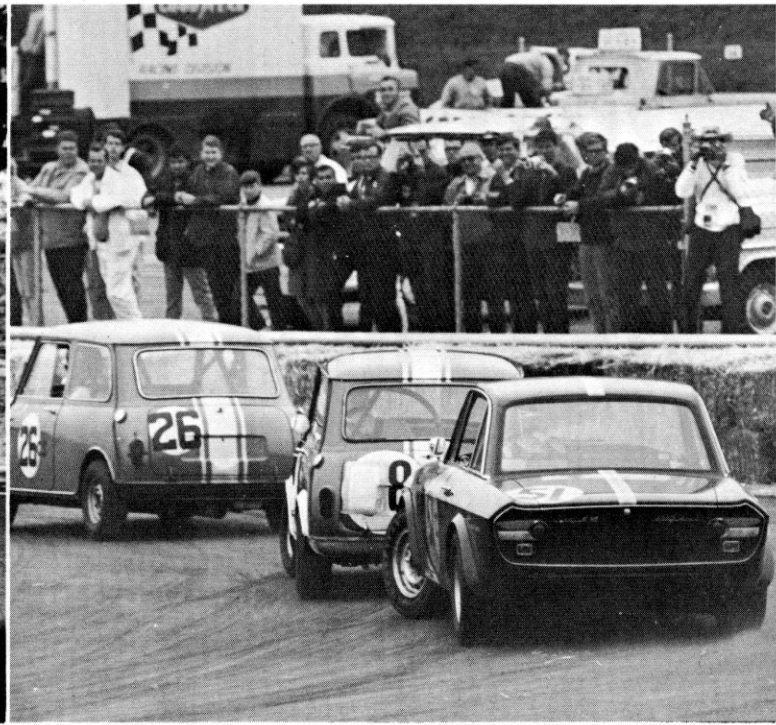
H. B. Luginbuhl Photo



Dave Allen Photo

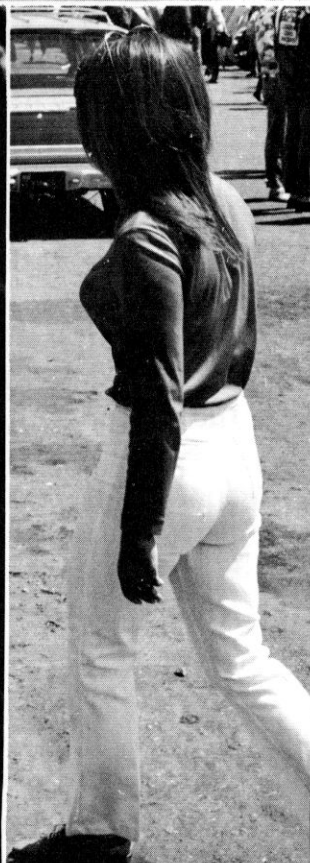
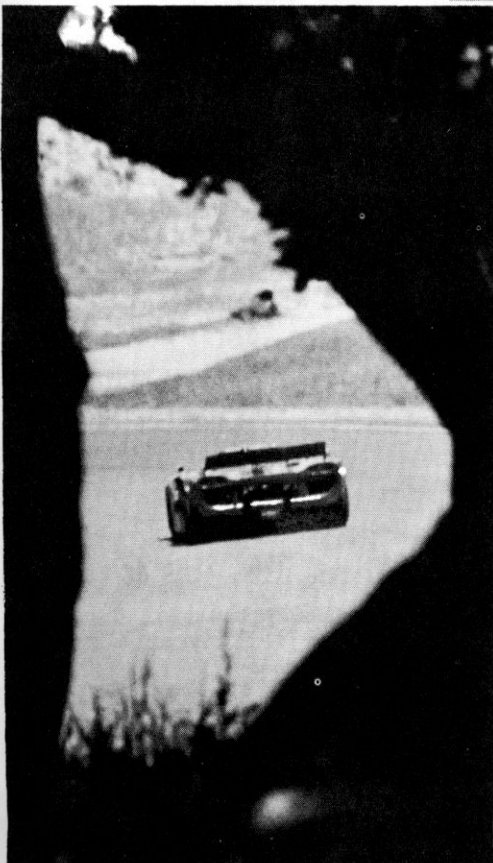
Bob Crispin Photo





PHOTOS: Top — Ted Mock & Peter Sands. Center — Bob Crispin. Bottom — David Hale, Gordon Grochau and G. F. Cooley.

# TAILS





**Most drivers  
in major  
Western races  
choose Royal 76  
gasoline**

... exactly the same powerful  
premium you get at any Union Oil  
service station

Hardly surprising.

For one thing, Royal 76 is the official  
gasoline at Riverside, Laguna  
Seca, Stardust, Kent and Phoenix.

But more important, it delivers the  
power and performance that wins races.

Royal 76 has proven itself in race  
after race, win after win . . . proven  
itself powerful enough to make a  
difference.

Why not try a tankful in your car?

**UNION 76**